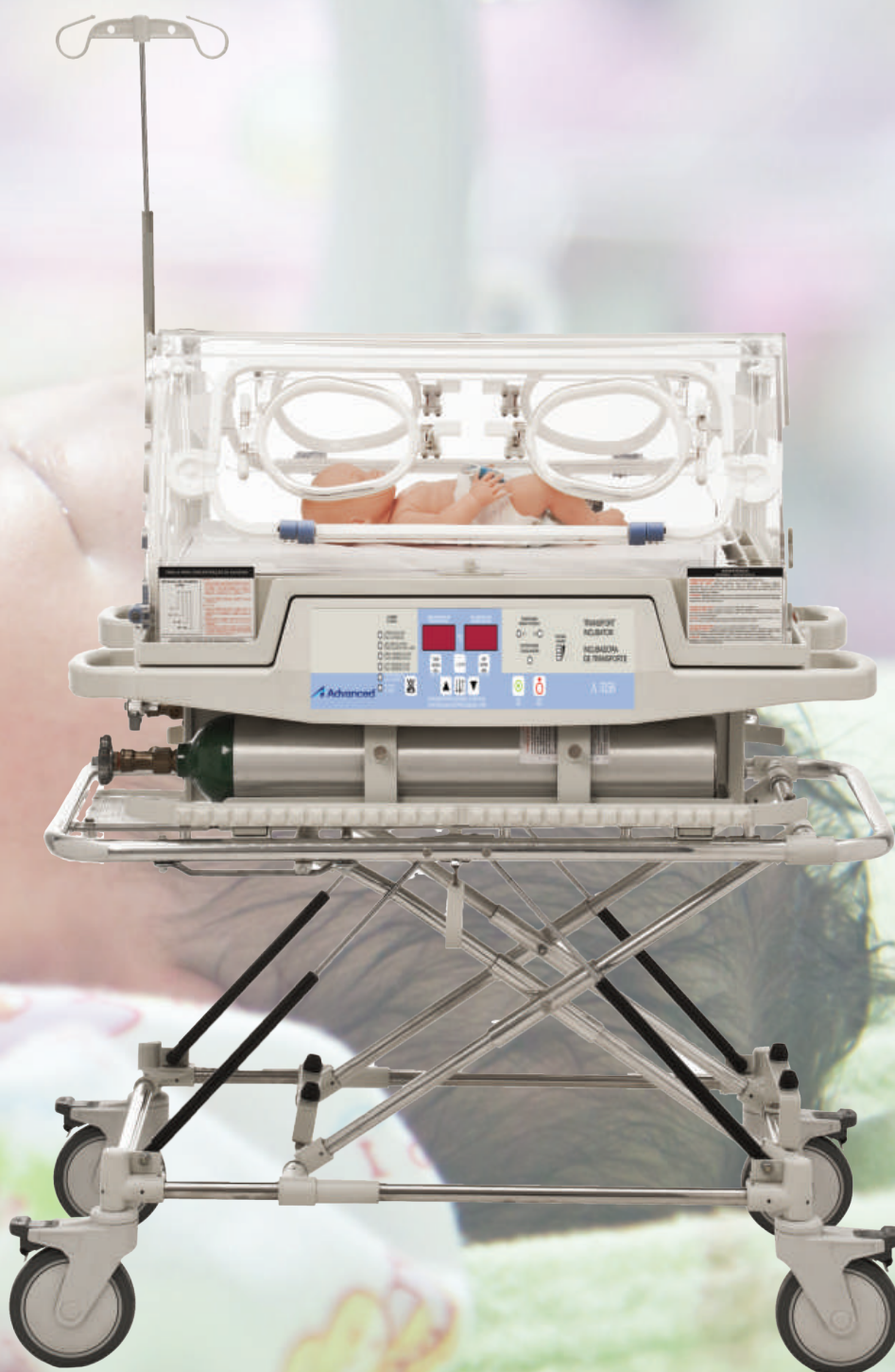


Transport Incubator A3158



Infant Transport Incubator

safe and reliable

A3158

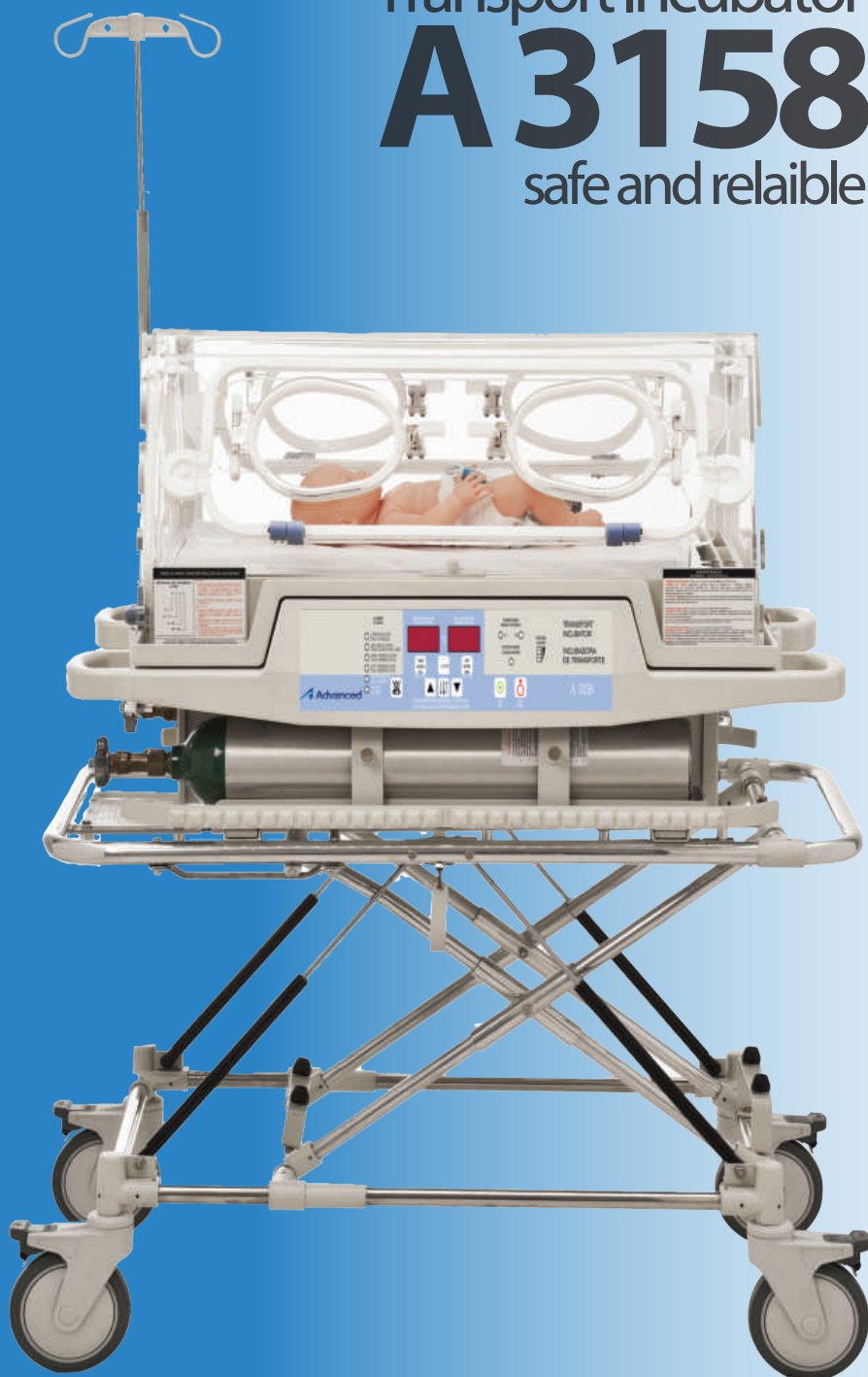
Highly advanced new generation of transport incubator

The Advanced Instrumentations A3158 Transport Infant Incubator meets all of the necessary requirements to transport newborns in a safe and comfortable way. Its compact design makes it easy to manipulate in air or ground transportation.



Neonatology

Transport Incubator **A 3158** safe and reliable



Microprocessor controlled system.
LED display.
Double wall made of high optical quality acrylic.
Precise distribution of heat over the whole hood.
Removable parts easy to clean.
Internal Noise Level <60 dB.
Four Oval Ports.
Easy access panel in front and back.
Patient skin temperature probe.
Passive Humidity System .
Air Temperature monitoring.
Patient temperature monitoring.
Comprehensive alarm system.
Heating failure alarm.
Skin probe failure.
Air probe failure.
Air circulation failure.
Power supply failure
System failure.
Low battery alarm.
Air micro-filter.
Castors with brakes.
IV Pole.
Power Supply: AC 100/240 Volts 50/60 Hz.
and DC Voltage.
Meets CE Directive 93/42EEC On Medical
Device (MDD).

Technical Specifications

Noise Level		< 60dBA, environment <45dBA		
Thermo Regulation	Air Temperature Range	20.0 – 39.0°C		
	Skin Temperature Range	34.0 – 38.0°C		
	Accuracy Air/skin Control	+/- 0.2°C		
	Skin Mode Surpassing	>37°C		
	Reading Band On Temperature Display	Air mode (ATC) 20.0 - 45.5°C	Skin mode (ITC) 20.0 - 45.0°C	
Oxygen Concentration		21% to 90%		
Humidification		Greater than 60% relative humidity with disposable sponge		
Visibility		Hoods are plexiglass on all sides providing 100% visibility		
Accessibility	Access Doors	4		
	Mattress	Slide out mattress deck		
	Access ports for I.V., respiration tubing and monitor leads			
Display Information	Refilling Time	Power inlet AC or DC Skin control mode	Battery charge Key >37.5°C	Air Control Mode 4 Power heating indicator (25%, 50% ,75% ,100%)
Alarms	High Temp Security Limited	40.0°C		
	High air Temp	1.0°C		
	High Skin Temp	1.0°C		
	Low Air Temp	3.0°C		
	Low Skin Temp	1.0°C		
	Failure Air Sensor	Yes		
	Failure Skin Sensor	Yes		
	Patient Probe Dislodgement	Yes		
	Air Flow	Yes		
	Power Failure and Low Batteries	Yes		
Electric Specifications	AC Input	AC 127V – 3A / 220V – 2A, (+/- 10%), 50/60Hz 180W		
	DC Input	DC 12VDC – 10A		
Battery	Type	Sealed rechargeable		
	Voltage	12 VDC nominal		
	Quantity	2		
	Life Expectancy	At least 200 cycles		
	Autonomy	4 hours		
Physical Specifications	Width	56.5 cm		
	Depth	102.0 cm		
	Height	118.0 cm		
	Incubator’s Weight	86.7Kg		
	Total Weight	98.0Kg		
	Module Weight with 2 Batteries	22.7Kg		

2016 Advanced Instrumentations, Inc., is a U.S.A registered company – All rights reserved.

All functionality, features, specifications and other product information provided in this document including, but not limited to, the benefits, design, pricing, components, performance, availability, and capabilities of the product are subject to change without notice or obligation. Advanced Instrumentations reserves the right to make changes to this document and the product described herein, at any time, without obligation on Advanced Instrumentations to provide notification of such change. Actual description and specification of the product in this document may be different. Images shown here are for representational purpose only, actual may vary.

Advanced and Advanced instrumentations trademarks and logos shown are property of Advanced Instrumentations, Inc.

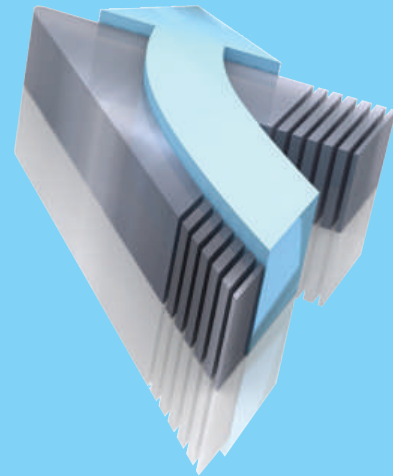
Advanced Instrumentations, Inc.
Success Through Quality, Since 1988
A Company You Can Trust

Advanced Instrumentations manufactures leading medical technology equipment in the areas of anesthesia, cardiology, operating room, gynecology and obstetrics, IV therapy, patient monitors, hospital furniture, neonatology and ultrasound. We deliver to the healthcare industry the highest-quality standards, reliability, and patient safety in all our products through effective, and rigorous testing procedures by our own department of Biomedical Engineering in the United States. All of our equipment comes with 2 years warranty and excellent post-sale support services.

Advanced Instrumentations, Inc., complies with the requirements of the ISO standards 9001: 2008 and 13485-2003 following the audit by one of the most prestigious global certification companies, as it is TÜV SÜD America. We comply with the requirements and are audited by the US Food and Drug Administration (FDA) an entity of the Health and Human Services of the United States of America. These certifications are the result of dedication and commitment to excellence in our products and services.



6800 N.W. 77 Court,
Miami, FL 33166
U.S.A.
Phone: 305-477-6331
Fax: 305-477-5351



For additional information visit us at:
www.advanced-inst.com