

CATALOGUE

2025

Europe

Our solutions

Standard offer 4

KOELIS Trinity® 6

SYSTEM 6

APPLICATIONS 8

Transperineal Application 8

Transrectal Application 8

Promap 3D Prostate Suite - Koelis Trinity® 9

ACCESSORIES 12

Probe and Guides - Transperineal 12

Probe and Guides - Transrectal 16

Other Probe and Guides 18

Probe holder 20

ProMap Lite™ 22

ProMap 3D Prostate Suite 23

ProMap-FT Software 25

Focal therapy imaging and planning software 25

Targeted Microwave Ablation (TMA) 26

Transport and storage 27

Services 29

KOELIS Trinity® 29

ProMap Lite™ 31

N.B: KOELIS references displayed here are the references to be used in case of purchase of initial sale. The reference for an add-on to an install system might be different. Use KOELIS pricelist or contact your local KOELIS representative for further information

Standard offer

Standard offer



KOELIS Trinity®
with MR/US fusion software
- KURO-3000-3 Trinity
- KSOF-T-MR MR/US fusion software



2nd look follow-up software
- KSOF2602-L: 2nd Look software

> TRANSPERINEAL APPROACH

TRANSPERINEAL APPLICATION
- KSOF-2602-P
+ K3DEL00



SINGLE USE TP GUIDES

- KSU.EL1.18-25 Perine mini grid SU
- KSU.EL4.18-25 Perine full grid SU



OR

REUSABLE TP GUIDES

- KRNG.EL1.18-5 Perine grid
- KRNG.EL4.18-5 Perine full grid



STEADY-PRO™ PROBE HOLDER

- KSP.Arm + KSP.SUPP.TP



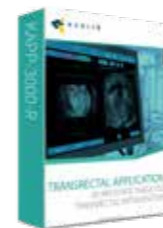
SERVICE CONTRACT

- KMNT-3000-SE Serenity maintenance program
- KMNT-MODULO-SE MODULO option

AND /OR

> TRANSRECTAL APPROACH

TRANSRECTAL APPLICATION
- KSOF-2602-U
+ K3DEC00-2



SINGLE USE TR GUIDES

- KDNG00-96



OR

REUSABLE TR GUIDES

- GKP490-5



STEADY-PRO™ PROBE HOLDER

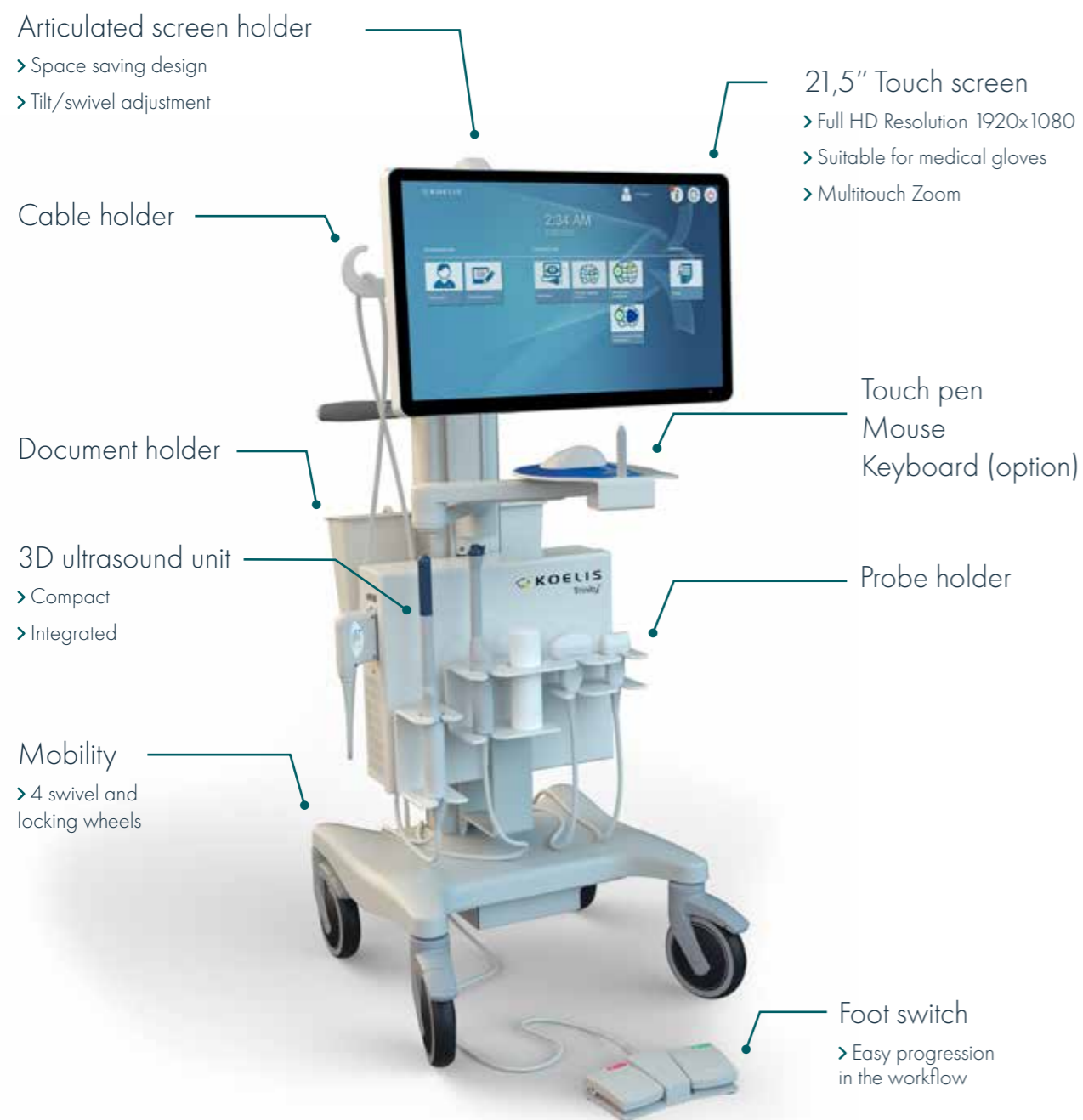
- KSP.Arm + KSP.SUPP.TR



SERVICE CONTRACT

- KMNT-3000-SE Serenity maintenance program
- KMNT-MODULO-SE MODULO option

KOELIS Trinity®



KOELIS Trinity®

MRI/US OBT FUSION™ PROSTATE BIOPSY

KOELIS Trinity® system entails pertinent and precise cartography functions with an embedded ultrasound system. Designed for a majority of urological applications, its ergonomics and ease of use provide an efficient progression all along the clinical workflow.

Ultrasound system

Advanced ultrasound system for urologic applications that provide the following functions:

- B-mode, Color Doppler and Power Doppler 2D imaging modes
- "Full 3D" B-mode for prostate imaging
- Factory and user ultrasound presets
- Distance and volume measurements
- Screenshots
- Instrument tract display
- Automatic procedure report

KOELIS Trinity® is a mobile and compact platform equipped with:

- A high performance central unit within a protective box
- All suitable connectivity for inputs/outputs of data (Ethernet, CD/DVD, USB 3.0...)
- A medical-grade 21.5" HD touchscreen with adjustable position
- Medical-grade interaction devices: Mouse, Footswitch, Touchscreen pen, Keyboard (option)
- 4 lockable wheels
- 50cm x 50cm footprint
- Medical cart for safe and easy handling

| REF | DESCRIPTION |
|-------------|---|
| KURO-3000-3 | KOELIS Trinity® - 3D Prostate Suite and fully integrated system |

Transperineal Application

3D TARGETED PROSTATE TRANSPERINEAL INTERVENTION

After years of experience in transrectal access, KOELIS has developed this application to assist clinicians in their everyday practice of biopsy procedures in transperineal access.

Thanks to its semi-guided workflow, the software helps you to perform an optimal sampling while recording the whole procedure in a patient-specific 3D prostate model. No additional time is required in comparison to the standard procedure and data can be reviewed and completed any time after the procedure.

The ideal quality control for your practice.



| REF | DESCRIPTION |
|-------------|---|
| KSOF-2602-P | Promap US Perine Software - Perine 3D TRUS Prostate Mapping |

Transrectal Application

3D TARGETED PROSTATE TRANSRECTAL INTERVENTION

This application assists clinicians in their everyday practice of biopsy procedures in transrectal access.

Thanks to its semi-guided workflow, the software helps you to perform an optimal sampling while recording the whole procedure in a patient-specific 3D prostate model.

No additional time is required in comparison to the standard procedure and data can be reviewed and completed any time after the procedure.

The ideal quality control for your practice.



| REF | DESCRIPTION |
|-------------|---|
| KSOF-2602-U | Promap US Transrectal Software - Transrectal 3D TRUS Prostate Mapping |

ProMap 3D Prostate Suite

**PROMAP-MR SOFTWARE
MR FUSION PROSTATE CARTOGRAPHY**

The information of the MRI, the live guidance of the ultrasound. Bring the clinical value of MRI/3D TRUS elastic fusion to target your prostate procedures.

Features

- Use all kinds of MR images thanks to the extended DICOM MR compatibility and import capacities (PACS/Network/CD/USB).
- Accurately delineate ROIs in no time with the exclusive and semi-automatic KOELIS 3D tools.
- Ensure optimal understanding of your whole medical team by using the ROIs characterization capacity (PIRADS, LIKERT,...).
- Take advantage of the accurate and automatic KOELIS MRI/US elastic fusion technology.
- See the accuracy of the MR/US fusion with the dedicated interface that displayed superimposed images.
- Guide your needle to the right location, targets are displayed on the ultrasound images during the procedure.

| REF | DESCRIPTION |
|-------------|-------------------------------|
| KSOF-2602-M | PROMAP-MR Software: MR Fusion |

**PROMAP CONTOUR SOFTWARE
TO IMPORT AND FUSE RT-STRUCT ANNOTATED MRI IMAGES**

Promap Contour is a software option that allows TRINITY to recognise and fuse DICOM RT-STRUCT annotations made on DICOM images by third-party radiology softwares. Available from Promap 4.8.2.

| REF | DESCRIPTION |
|--------------|--|
| KSOF-2602-RT | Promap-Contour, software option; to import and fuse RT-STRUCT annotated images |

**PROMAP-2L SOFTWARE
2ND LOOK PROSTATE CARTOGRAPHY**

Guide the procedure in regard to the previous one! Thought as a must-have for active surveillance biopsy, for follow-up biopsy after treatment or to frame tumors for treatment planning purpose, this software allows to fuse several exams in one. Previous information will be fused and displayed during the ongoing procedure to help you sample the right location.

Features

- Exclusive elastic inter-series 3D TRUS fusion process.
- 3D visualization and targeting of second-look instruments.

| REF | DESCRIPTION |
|-------------|--|
| KSOF-2602-L | PROMAP-2L Software - 2 nd Look Fusion |

ProMap 3D Prostate Suite

**PROMAP-PET SOFTWARE
PET & CT FUSION PROSTATE CARTOGRAPHY**

The potential of the PET & CT, the live guidance of the ultrasound.
Take advantage of both to target your prostate procedures with this software option that fuse PET/CT and 3D TRUS images.

Features

- Use all kinds of PET/CT images thanks to the extended DICOM PET/CT compatibility and import capacities (PACS/Network/CD/USB).
- Detect the suspicious areas with the Standardize Uptake Value (SUV)* calculation capacity
- Accurately delineate ROIs to target in no time with the exclusive and semi-automatic KOELIS 3D tools.
- Ensure optimal understanding of your whole medical team by using the ROIs characterization capacity (PIRADS, LIKERT,...).
- Take advantage of the accurate and automatic fusion with the KOELIS elastic fusion technology
- See the accuracy of the PET/CT/US fusion with the dedicated interface that displayed superimposed images.
- Guide your needle to the right location, targets are displayed on the ultrasound images during the procedure.

| REF | DESCRIPTION |
|---------------|---------------------------------------|
| KSOF-2602-PET | PROMAP-PET Software - PET & CT Fusion |

**Requires PROMAP-VM Software below.*

**PROMAP-GR SOFTWARE
2D GRIDS DYNAMIC PROTOCOL**

A specific and intuitive interface allows for accurate transperineal interventions performed with 2D grids.
The new software makes biopsies and treatments simple, exact and fast.

Features

- Medical act can be performed with reduced probe's movements.
- Accurate intervention planning on a just acquired 3D TRUS prostate volume.
- Ultrasound beam automatically guided for taking the samples in the exact location previously planned, guaranteeing precision and practitioner's comfort.

| REF | DESCRIPTION |
|--------------|--|
| KSOF-2602-GR | PROMAP-GR software-2D Grids Dynamic Protocol |

Software required for using Perine Full Grid.

ProMap 3D Prostate Suite

**PROMAP-VM SOFTWARE
MEASUREMENTS (PROSTATE AND TARGETS VOLUME, SUV FOR PET IMAGES)**

Use the complete potential of the 3D ultrasound and of the system capacities with this software option that calculate all kind of measures.

Features

- Prostate volume measurement: An exact measurement of the prostate volume computed from the 3D contour. Compatible with images of all modalities (US, MR, PET, CT).
- Region Of Interests Is volume measurements: An exact measurement of the ROI volume computed from the 3D contour. Compatible with images of all modalities (US, MR, PET, CT).
- SUV (Standardized Uptake Value) computation for PET images: Quantitative analysis for the definition of standards for lesion staging, accurate localization of tumors as well as the ease and confident definition of contours and margins.

| REF | DESCRIPTION |
|-------------|--|
| KSOF-2602-V | PROMAP-VM Software: Measurements (Prostate & targets volume, SUV for PET images) |

**PROMAP-EX SOFTWARE
EXPORT OF THE KOELIS 3D CARTOGRAPHY ON THE FOCAL ONE® HIFU SYSTEM**

Export of the KOELIS 3D Cartography.

Intended for treatment planning purpose, KOELIS 3D cartography can be exported to a compatible system to ensure quality control based on recorded information.

Features

- A real 3D dataset that contains all the 3D cartography: the 3D ultrasound volume, the patient-specific 3D prostate model, all the ROIs and all the biopsy cores recorded and color-coded.
- Export possible to USB drive or network location.

| REF | DESCRIPTION |
|-------------|---|
| KSOF-2602-X | PROMAP-Ex Software - 3D Cartography Export to Focal One |

Probe and Guides - Transperineal

3D ENDOCAVITY SIDE-FIRE PROBE FOR TRANSPERINEAL PERINE® APPLICATION

KOELIS 3D transducer achieves full prostate acquisition in less than 3 seconds without probe movement, avoiding artifact and minimizing MRI/US fusion errors.

- Clinical Application: Prostate
- Frequency: 4- 9 MHz
- Field of view: 72 mm, linear lateral-fire
- Sweeping angle: 170°
- Shaft radius: 10 mm
- Imaging modes: B-mode 2D, B-mode 3D, Color Doppler, Power Doppler



| REF | DESCRIPTION |
|---------|-------------------------------|
| K3DEL00 | 3D endocavity Side-Fire probe |

Probe and Guides - Transperineal

SINGLE USE PERINE MINI GRID FOR 3D ENDOCAVITY SIDE-FIRE PROBE

Single use Perine mini Grid 17-18G is designed to be used with K3DEL00 probe.

Single use Perine mini Grid packed in sterile single pouch is ready to be used. Its pleasant design ensure an clear needle positioning and a secure fixation. With 18 marked needle positions spaced 3mm and a guide length of 25mm, it allows a good guiding and let a real liberty to the physician.



| REF | Gauge size | Number of guides |
|---------------|------------|------------------|
| KSU.EL1.18-25 | 17-18 G | 25 |

SINGLE USE PERINE FULL GRID FOR 3D ENDOCAVITY SIDE-FIRE PROBE

Single use Perine Full Grid 17-18G is designed to be used with K3DEL00 probe.

Single use Perine Full Grid packed in sterile single pouch is ready to be used. Its pleasant design ensure a clear needle positioning and a secure fixation. With a guide length of 25mm and 159 marked needle positions with 5 mm spacing, the whole prostate is covered with minimized movement, helping to gain accuracy.

N.B: Perine Full Grid requires the installation of PROMAP-GR Software-2D grids Dynamic Protocol option.



| REF | Gauge size | Number of guides |
|---------------|------------|------------------|
| KSU.EL4.18-25 | 17-18 G | 25 |

Probe and Guides - Transperineal

REUSABLE GUIDE PERINE GRID FOR 3D ENDOCAVITY SIDE-FIRE PROBE

Reusable guides Perine Grid 17-18G and 14G are designed to adapt on K3DELOO probe. The sterilizable reusable guides are made of Propylux™.

Perine Grid 17-18G and 14G are pleasant to use thanks to their white color that brings clearness to the designation of needles' position and to its easy-to-use secure attachment system for safely holding the probe. Perine Grid is also accurate, having 20 marked needle positions spaced 3 mm and a guide length of 25 mm.



| REF | Gauge size |
|---------------|------------|
| KRNG.EL1.18-5 | 17-18G |
| KRNG.EL1.14-5 | 14G |

REUSABLE GUIDE PERINE NAIL FOR 3D ENDOCAVITY SIDE-FIRE PROBE

Reusable guide Perine Nail is designed to adapt on K3DELOO probe. The sterilizable reusable guide is made of Propylux™.

Perine Nail is pleasant to use thanks to its white color that brings clearness to the designation of needles' position and to its easy-to-use secure attachment system for safely holding the probe. Perine Nail is also accurate, having a 14G or 17-18G nail to guide and release the needle. It offers high precision in needle positioning through 13 marked needle positions with 5 mm spacing and a guide length of 25 mm.



| REF | Gauge size |
|---|------------------|
| KRNG.EL2.18 Including KRNG.EL2 NAIL.18 | - - 17-18G |
| KRNG.EL2.14 Including KRNG.EL2 NAIL.14 | - - 14G |

Probe and Guides - Transperineal

REUSABLE GUIDE PERINE FULL GRID FOR 3D ENDOCAVITY SIDE-FIRE PROBE

Reusable guides Perine Full Grid 17-18G and 14G are designed to be used with K3DELOO probe. The sterilizable reusable guides are made of Propylux™.

Perine Full Grid is pleasant to use thanks to its white color that brings clearness to the designation of needles' position and to its easy-to-use secure attachment system for safely holding the probe. With a guide length of 20mm and 169 marked needle positions with 5 mm spacing, the whole prostate is covered with minimized movement, helping to gain in accuracy.



N.B: Perine Full Grid requires the installation of PROMAP-GR Software-2D grids Dynamic Protocol option.

| REF | Gauge size |
|---------------|------------|
| KRNG.EL4.18-5 | 17-18G |
| KRNG.EL4.14-5 | 14G |

Probe and Guides - Transrectal

3D ENDOCAVITY END-FIRE PROBE FOR TRANSRECTAL END-FIRE® APPLICATION

The 3D Endocavity End-Fire Probe K3DEC00-2 makes 3D acquisitions with high spatial and temporal resolution.

- Clinical Application: Prostate
- Frequency: 4- 9 MHz
- Field of view: 146°, convex End-fire
- Sweeping angle: 90°
- Radius of curvature: 10 mm
- Imaging modes: B-mode 2D, B-mode 3D, Color Doppler, Power Doppler



| REF | DESCRIPTION |
|-----------|------------------------------|
| K3DEC00-2 | 3D endocavity End-Fire probe |

Probe and Guides - Transrectal

SINGLE USE GUIDE FOR 3D ENDOCAVITY END-FIRE PROBE

The reusable guide ref KDNG00 is designed to adapt on End-Fire K3DEC00/ K3DEC00-2.

Made for End-Fire needle access, the guide is straight and makes the needle insertion easy. It shows smooth angles for patient comfort. This guide is delivered sterile, is meant to be a single-use guide.



| REF | DESCRIPTION |
|-----------|------------------|
| KDNG00-96 | Single use guide |

REUSABLE GUIDE FOR 3D ENDOCAVITY END-FIRE PROBE

The reusable guide ref GPK-490 is designed to adapt on End-Fire K3DEC00/ K3DEC00-2.

Made for End-Fire needle access, the guide is straight and makes the needle insertion easy. It shows smooth angles for patient comfort.

This stainless steel guide is meant to be sterilized by autoclave.



| REF | DESCRIPTION |
|----------|----------------|
| GPK490-5 | Reusable guide |

Other Probe and Guides

CONVEX ABDOMINAL PROBE

The Convex Abdominal Probe K2DAB00 provides optimal skin contact and a good balance between penetration and resolution.

Its curvature and its 60° field of view makes it suitable for all abdominal applications.

Features

- Clinical Application: Abdominal, Urology (bladder, kidney...)
- Frequency: 2- 5 MHz
- Field of view: 60°
- Radius of curvature: 60 mm
- Imaging modes: B-mode, Color Doppler, Power Doppler



| REF | DESCRIPTION |
|---------|------------------------|
| K2DAB00 | Convex abdominal probe |

REUSABLE CON-LEAD GUIDE FOR CONVEX ABDOMINAL PROBE

CON-LEAD reusable guide is designed to adapt on probe K2DAB00. This reusable guide is made in Propylux™ and it is sterilizable.

CON-LEAD is easy to use. It is clipped on the probe and a 14G or 18G nail with a guide length of 25 mm is inserted in the guide to lead and release the needle.



| REF | Gauge size |
|---|---------------|
| KRNG.AB.18 Including KRNG.AB NAIL.18 | - - 18G |
| KRNG.AB.14 Including KRNG.AB NAIL.14 | - - 14G |

Other Probe and Guides

LINEAR SMALL PARTS PROBE

The Linear Small Parts Probe ref K2DLN00 with its high density crystal is perfectly designed for small organs requiring small penetration.

Features

- Application: Small parts (scrotum, testis...)
- Frequency: 7.5 - 15 MHz
- Length: 40 mm
- Imaging modes: B-mode, Color Doppler, Power Doppler



| REF | DESCRIPTION |
|---------|--------------------------|
| K2DLN00 | Linear small parts probe |

REUSABLE LIN-LEAD GUIDE FOR LINEAR SMALL PARTS PROBE

LIN-LEAD reusable guide is designed to adapt on probe K2DLN00. This reusable guide is made in Propylux™ and it is sterilizable.

LIN-LEAD is easy to use. It is clipped on the probe and a 14G or 18G nail with a guide length of 25 mm is inserted in the guide to lead and release the needle.



| REF | Gauge size |
|---|---------------|
| KRNG.LN.18 Including KRNG.LN NAIL.18 | - - 18G |
| KRNG.LN.14 Including KRNG.LN NAIL.14 | - - 14G |

Probe holder

**KOELIS STEADY PRO™
 PROBE HOLDER**

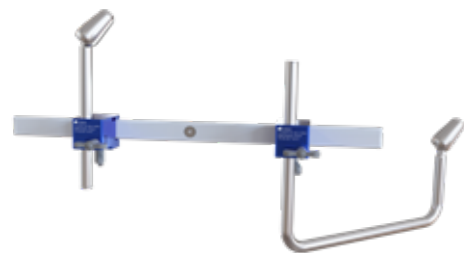
The KOELIS compact and light probe holder makes it possible to manipulate KOELIS probes with six degrees of freedom. After the probe is positioned, it is easily locked in place by the clinician ensuring maximum accuracy while performing prostate biopsies or treatments.

Designed for transperineal and transrectal approaches, the probe holder has a specific probe interface for each 3D US probe in order to stop movement once the position is locked.



| REF | Description |
|---------|--|
| KSP.ARM | STEADY PRO® articulated arm (X1 unit) with simple I and U extensions |

CONTAINING



SIMPLE I OR U EXTENSIONS
 Extensions are easily adapted to every clinical use
 Fixation: on hospital bed

OPTIONAL UNIVERSAL CLAMPING BASE

Thanks to this universal clamping base, the steady pro™ can be fixed anywhere even without bedrail.

| REF | Description |
|---------------|--|
| KSP.UnivClamp | Universal clamping base compatible with steady pro articulated arm |

Probe holder

**KOELIS STEADY PRO™ SUPPORT
 FOR 3D ENDOCAVITY END-FIRE PROBE**

KOELIS STEADY PRO™ SUPPORT is specially designed to hold the KOELIS 3D Endocavity End-Fire probe K3DEC00 and K3DEC00 -2.

KOELIS STEADY PRO™ SUPPORT allows to move the probe freely in the working space and maintains the probe in a specific position. The probe holder is easy to use and optimized for transrectal approach.



Features

- Rotation: 360° around the probe axis
- 6 degrees of freedom to place the arm and 3 degrees of freedom to find the right position for the probe
- Cleanable and sterilizable

| REF | Description |
|-------------|---|
| KSP.SUPP.TR | Reusable STEADY PRO® supports for 3D endocavity end-fire probe (x5 units) |

**KOELIS STEADY PRO™ SUPPORT
 FOR 3D ENDOCAVITY SIDE-FIRE PROBE**

KOELIS STEADY PRO™ SUPPORT is specially designed to hold the KOELIS 3D Endocavity Side-Fire probe K3DEL00.

KOELIS STEADY PRO™ SUPPORT allows to move the probe freely in the working space and maintains the probe in a specific position. The probe holder is easy to use and optimized for transperineal approach.



Features

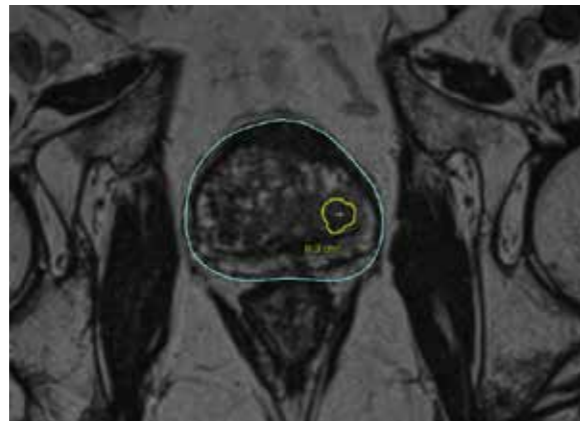
- Rotation: 160° around the probe axis
- 6 degrees of freedom to place the arm and 3 degrees of freedom to find the right position for the probe
- Cleanable and sterilizable

| REF | Description |
|-------------|--|
| KSP.SUPP.TP | Reusable STEADY PRO® supports for 3D endocavity side-fire probe (x5 units) |

ProMap Lite™

ProMap Lite™ is a solution for radiologists to efficiently annotate prostate MRI findings for fusion biopsy. It seamlessly integrates into your current workflow as a complement to the viewing software and ensures high productivity from day one.

Developed by KOELIS, an international leader in MR/Ultrasound prostate fusion biopsy, ProMap Lite™ software leverages semi-automated 3D algorithms to contour the prostate and ROIs on the MR studies with time efficiency. Studies are imported “ready to fuse” on the KOELIS Trinity®, the only interventional urologic system that uses 3D ultrasound and Organ-Based Tracking fusion®. This unique solution enables accurate biopsy procedures and ensures that patients will receive the optimal care they deserve.



CONTAINING

| REF | DESCRIPTION |
|-------------------|--|
| KSOF-2602-Li | ProMap Lite™ Software – License for 1 computer, 1 year |
| KSOF-22602-Li-ONE | ProMap Lite™ Software – License for 1 computer, Lifetime software activation |

COMPATIBLE SOFTWARE OPTIONS

| REF | DESCRIPTION |
|----------------------|--|
| KSOF-2602-Li-PET | ProMap Lite™ Software option for PET & CT fusion – License for 1 computer, 1 year |
| KSOF-2602-Li-PET-ONE | ProMap Lite™ Software option for PET & CT fusion – License for 1 computer, Lifetime software activation |
| KSOF-2602-Li-SGx | ProMap Lite™ Software option for 3D Cartography export in standardized format – License for 1 computer, 1 year |
| KSOF-2602-Li-SGx-ONE | ProMap Lite™ Software option for 3D Cartography export in standardized format – License for 1 computer, Lifetime software activation |
| KSOF-2602-Li-RT | ProMap Lite™ Software option for PET & CT fusion – License for 1 computer, 1 year |
| KSOF-2602-Li-RT-ONE | ProMap Contour RT-Struct annotation, import and fusion – License for 1 computer, Lifetime software activation |

ProMap Lite™

ProMap 3D Prostate Suite

PROMAP-PET SOFTWARE PET & CT FUSION PROSTATE CARTOGRAPHY

The potential of the PET & CT, the live guidance of the ultrasound.
Take advantage of both to target your prostate procedures with this software option that fuses PET/CT and 3D TRUS images.

Features

- Use all kinds of PET/CT images thanks to the extended DICOM PET/CT compatibility and import capacities (PACS/Network/CD/USB).
- Detect the suspicious areas with the Standardize Update Value (SUV)* calculation capacity
- Accurately delineate ROIs to target in no time with the exclusive and semi-automatic KOELIS 3D tools.
- Ensure optimal understanding of your whole medical team by using the ROIs characterization capacity (PIRADS, LIKERT,...).
- Take advantage of the accurate and automatic fusion with the KOELIS elastic fusion technology.
- See the accuracy of the PET/CT/US fusion with the dedicated interface that displayed superimposed images.
- Guide your needle to the right location, targets are displayed on the ultrasound images during the procedure.

| REF | DESCRIPTION |
|----------------------|---|
| KSOF-2602-Li-PET | ProMap Lite™ Software option for PET & CT fusion – License for 1 computer, 1 year |
| KSOF-2602-LI-PET-ONE | ProMap Lite™ Software option for PET & CT fusion – License for 1 computer, Lifetime software activation |

PROMAP CONTOUR SOFTWARE TO IMPORT AND FUSE RT-STRUCT ANNOTATED MRI IMAGES

ProMap Contour is a software option that allows TRINITY to recognise and fuse DICOM RT-STRUCT annotations made on DICOM images by third-party radiology softwares.
Available from Promap 4.8.2.

| REF | DESCRIPTION |
|---------------------|---|
| KSOF-2602-Li-RT | ProMap Contour RT-Struct annotation, import and fusion – License for 1 computer, 1 year |
| KSOF-2602-LI-RT-ONE | ProMap Contour RT-Struct annotation, import and fusion – License for 1 computer, Lifetime software activation |

ProMap 3D Prostate Suite

PROMAP-SGX SOFTWARE 3D CARTOGRAPHY EXPORT IN STANDARDIZED FORMAT

Export of the KOELIS 3D Cartography.

Intended for treatment planning purpose, KOELIS 3D cartography can be exported in DICOM Surface Segmentation format to ensure quality control based on recorded information.

Features

- A real 3D dataset that contains the patient specific 3D prostate model, all the ROIs and all the biopsy cores recorded and color-coded.
- Export within a personalized frame of reference.
- Export possible to USB drive or network location.

| REF | DESCRIPTION |
|----------------------|---|
| KSOF-2602-Li-SGx | ProMap Lite™ Software option for 3D Cartography export in standardized format – License for 1 computer, 1 year |
| KSOF-2602-LI-SGx-ONE | ProMap Lite™ Software option for 3D Cartography export in standardized format – License for 1 computer, Lifetime software activation |

Focal therapy imaging and planning software

A breakthrough software to better plan, guide and monitor needle-based focal therapy techniques. Most adapted for focal cryoablation and laser ablation, regardless of the manufacturer.

Features

- Semi-automatic computation of treatment margins surrounding the MRI lesion
- Ability to contour organs at risk on the 3D Ultrasound (urethra, rectum)
- Display manufacturers' ablation charts or isotherms for improved intraoperative planning
- Treatment report with overlap score between isotherms and targets

| REF | DESCRIPTION |
|--------------|--|
| KSOF-2602-FT | Promap-FT Software - Focal Therapy imaging and planning software |

Targeted Microwave Ablation (TMA)

Transport and storage

FOCAL TREATMENT WITH KOELIS TRINITY® SYSTEM

For physicians looking to create or complement their prostate cancer focal therapy program, only KOELIS TMA provides a streamlined workflow comparable to a fusion biopsy, a high treatment accuracy provided by a new generation microwave combined with KOELIS patented organ-tracking algorithm that delivers personalized focal treatment in an ambulatory setting.

Features

- All-in-one diagnostic and focal treatment platform
- Straight forward workflow
- Intervention in less than 1 hour
- Ambulatory setting
- Scalable treatment
- Single needle treatment



| Targeted VLL™ Microwave Ablation (TMA) | |
|--|---|
| CAPEX + Disposable Model | |
| Product code | Description |
| TMA-TP-CART | Targeted VLL™ Microwave ablation equipment for transperineal approach |
| TAT03 | 2.45 Ghz microwave generator with VLL™ technology |
| KSOF-2602-KC | Promap-KC software- 3D prostate cartography for VLL™ microwave ablation |
| KRZL-EL-5 | Reusable needle holder Z-lock for transperineal approach (x5 units) |
| TT-BMB-0001-60 | Mobile cart for MW Generator |
| TMA-PACK-TP-5 | Targeted VLL™ Microwave Ablation pack for transperineal approach: 5 interventions |
| KSOF-2602-KT-5 | Single use token for ProMap-KC software (x5 units) |
| TTP1725CD-3M | Single use 17G 25cm microwave needle (x5 units) |

HARD TRANSPORT CASE KOELIS TRINITY®

Koelis proposes a transport case designed especially for KOELIS Trinity® System. Light and easy to move. Easy to load and unload.



It is composed of:

- Simple opening to make easier loading and unloading.
- Two handles on two opposite sides to easily hold the case.
- Four wheels easy to steer in all directions.
- Parking brakes enable easy transport and stable footing.
- Loading ramp.
- Foam to protect and to hold in place KOELIS Trinity®.
- Compartments to store endocavity, abdominal and linear probes cases.
- Eight secure latches for easy opening and closing.
- Empty weight: 58kg / 128lbs.
- Maximum authorized weight: 170 kg / 375 lbs.
- Dimensions 1.52 m x 0.72 m x 0.82 m / 60 in x 28 in x 32 in.

| REF | DESCRIPTION |
|-------------|---|
| KHTC-3000-1 | Hard Transport case for Trinity®KURO-3000-3 |

Transport and storage

KOELIS TRINITY® COVER

The anti-shock cover for KOELIS Trinity® System protects your KOELIS Trinity® system during transport from one room to another and during storage.

The anti-shock cover for the system has an opening giving access to the KOELIS Trinity® system's handles to be moved while covered. The cover also lets the document holder be easily reached.

| REF | DESCRIPTION |
|-------------|-----------------------|
| KTPP-3000-C | KOELIS Trinity® cover |



KOELIS TRINITY® SCREEN COVER

| REF | DESCRIPTION |
|--------------|------------------------------|
| REF: KTSC-00 | KOELIS Trinity® screen cover |



KOELIS Trinity® Services

ON-SITE TRAINING (1 DAY)

The training is made by KOELIS Application team and can be renewed on demand. It is dedicated to clinicians and their assistants. A training session in operating conditions is mandatory before any autonomous use of the KOELIS Trinity®.

The training schedule is organised this way:

- Presenting the system and its usage.
- Before the first intervention, a learning phase on phantom in order to make the trainees comfortable with the material and computerized surgical protocol.
- Then, at least one assisted biopsy/intervention shall be planned during the training period. Two are recommended. The team's timetable shall be precisely defined for the training purpose.

One on-site training is included with the purchase of KOELIS Trinity® and ProMap Lite™.

Additional training can be purchased.

| REF | DESCRIPTION |
|-------------|--------------------------|
| KMNT-3000-F | On-site training (1 day) |

Suitable for users of KOELIS Trinity® and ProMap Lite™.

MAJOR SOFTWARE UPDATE FOR KOELIS TRINITY® SYSTEM AND MRDRAW™ SYSTEM

KOELIS' major software update brings significant improvements including the latest features and ergonomics in the interface's design for a friendlier and faster workflow.

The software's upgrade enables the most recent options.

It concerns the change of the 1st or 2nd digit of the software's version, or the change of the 1st digit from 3.X.X to 4.X.X. Example: From 4.1.0 to 4.2.0 or from 3.1.6 to 4.1.0.

| REF | DESCRIPTION |
|----------------|--|
| KSOF-2602-Ma-T | Major software update for KOELIS Trinity® system |
| KSOF-2602-Ma-D | Major Software update for MrDraw™ system |

MINOR SOFTWARE UPDATE FOR KOELIS TRINITY® SYSTEM AND MRDRAW™ SYSTEM

KOELIS' minor software update brings constant updates on improved features and ergonomics in the interface's design for a friendlier and faster workflow.

It concerns the change of the 3rd digit of the software's version.

Example: From 4.1.0 to 4.1.1 or 4.1.2.

| REF | DESCRIPTION |
|----------------|--|
| KSOF-2602-Mi-T | Minor software update for KOELIS Trinity® system |
| KSOF-2602-Mi-D | Minor software update for MrDraw™ system |

ESSENTIAL MAINTENANCE PROGRAM

- One yearly evolutive software upgrade. Upgrade with new features and continous performance improvement.
- Yearly preventive maintenance visit and review of training points.

Detailed Maintenance offer available upon request.

| REF | DESCRIPTION |
|--------------|-------------------------------|
| KMNT-3000-ES | Essential maintenance program |

COMFORT MAINTENANCE PROGRAM

- Yearly evolutive software upgrade. Upgrade with new features and continous performance improvement.
- Yearly preventive maintenance visit and review of training points
- One on-site troubleshooting included (hardware and software after remote assistance).
- Free spare parts replacements and for 3D probes, central unit and SteadyPro™, only a deductible is applicable.

Detailed Maintenance offer available upon request.

| REF | DESCRIPTION |
|--------------|-----------------------------|
| KMNT-3000-CO | Comfort maintenance program |

SERENITY MAINTENANCE PROGRAM

- One yearly evolutive software upgrade. Upgrade with new features and continous performance improvement.
- Yearly preventive maintenance visit and review of training points
- On-site troubleshootings included (hardware and software after remote assistance).
- Free spare parts replacements including one 3D probe, one central unit and one KOELIS SteadyPro™ replacement per year. For next replacements, only a deductible is applicable

Detailed Maintenance offer available upon request.

| REF | DESCRIPTION |
|--------------|------------------------------|
| KMNT-3000-SE | Serenity maintenance program |

ADDITIONAL OPTION FOR THE SERENITY MAINTENANCE PROGRAM ONLY

One annual free replacement for a 3D probe.

| REF | DESCRIPTION |
|----------------|--|
| KMNT-MODULO-SE | Transrectal or Transperineal probe, Annual additional module to Serenity contract - MODULO |

SERENITY MAINTENANCE PROGRAM

- Telephone support
- Remote Maintenance Assisance
- Upgrades to the latest version available, including new functions and improvements
- Training on how to use the latest PROMAP software version and new features

Detailed Maintenance offer available upon request.

| REF | DESCRIPTION |
|---------------------|--|
| KMNT-4000-Li-ONE-SE | Promap Lite Annual Maintenance Program |

Targeted Microwave Ablation (TMA)

SERENITY MAINTENANCE PROGRAM

| REF | DESCRIPTION |
|-------------|---|
| KMNT-TMA-SE | TMA Annual Maintenance Program – SERENITY |

Health innovation as a passion



KOELIS has assisted physicians from around the world in their routine clinical practice since 2006, providing the latest technology for personalized prostate cancer management.

Based in Grenoble with a subsidiary in Princeton (NJ), Saarbrücken & Singapore, KOELIS has been featured in more than 80 clinical publications and has benefited to more than 250,000 patients on all continents.

Focused on developing targeted and less invasive solutions, KOELIS innovates every day in collaboration with world-renown universities and hospitals to offer physicians the newest advances in imaging for delivering efficient and patient-tailored solutions.



KOELIS
22, chemin du Vieux Chêne
38240 Meylan
France

KOELIS Inc.
116 Village Blvd, Suite 308
Princeton, NJ 08540
USA

KOELIS GmbH
Lebacher Strasse 4
Postfach 10 05
436113 Saarbrücken
Germany

KOELIS Representative Office
541 Orchard Road
#09-01 Liat Towers,
Singapore 238881