

Clinical Images from Gynocular



Author: Dr. Philip Gottlieb

Copyright belongs to Dr. Philip Gottlieb

Introduction

The purpose of this document is to present colposcopy images which were taken by Gynocular. Magnification of 5x, 8x, 12x was applied.

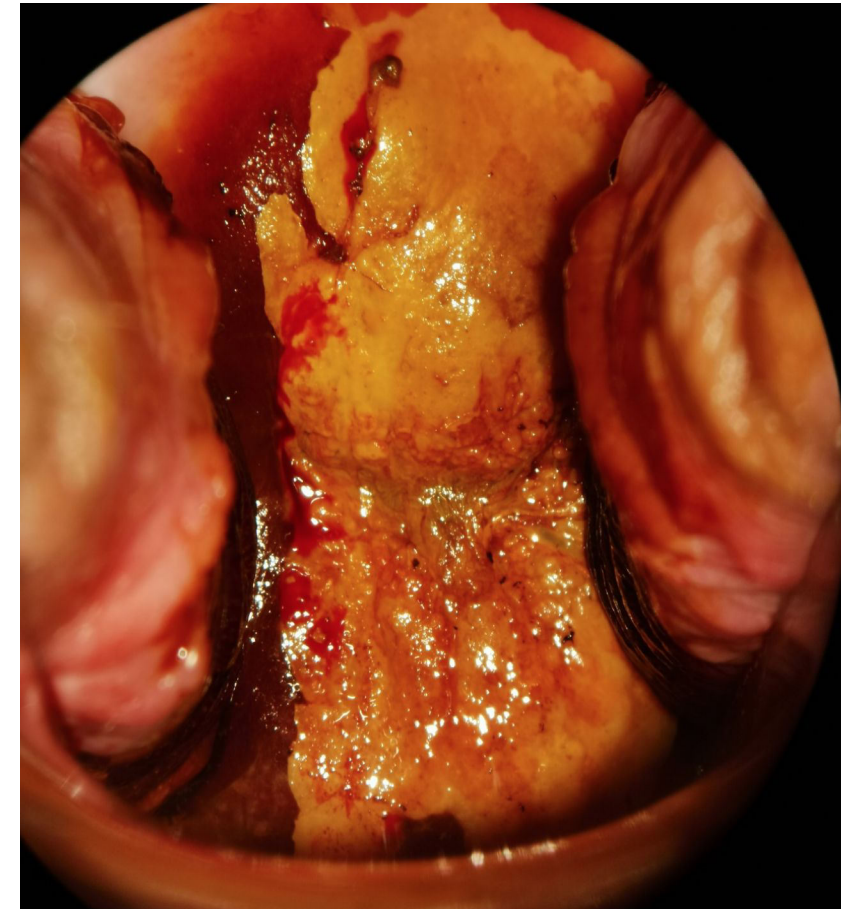
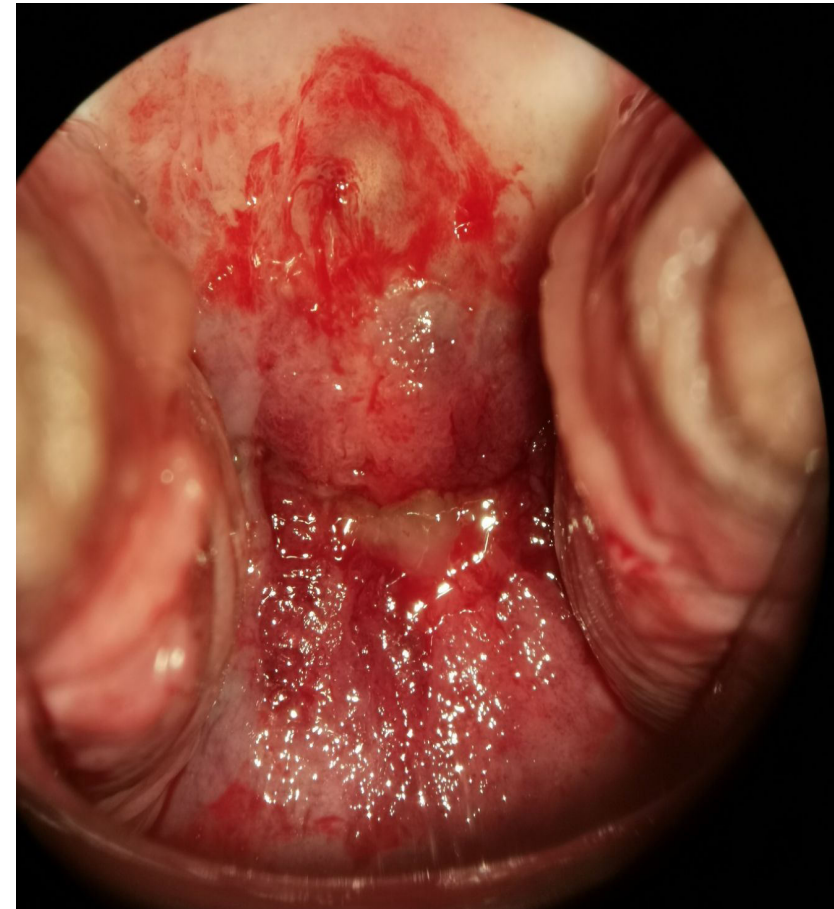
The images of six patients were taken separately using: sodium chloride, acetic acid (with or without green filter), Luguls Iodine during examination. In addition, each patient's' information and diagnosis are listed above the images.

Following the diagnosis, biopsy or intervention (LEEP) presented.

After sodium Chloride

Acetic Acid

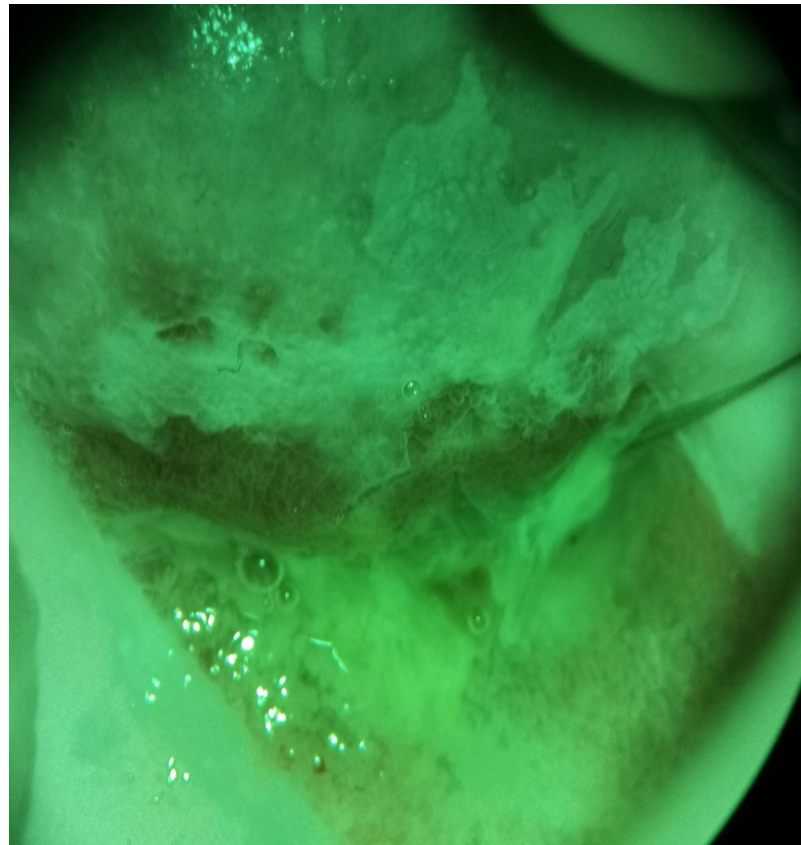
Luguls Iodide



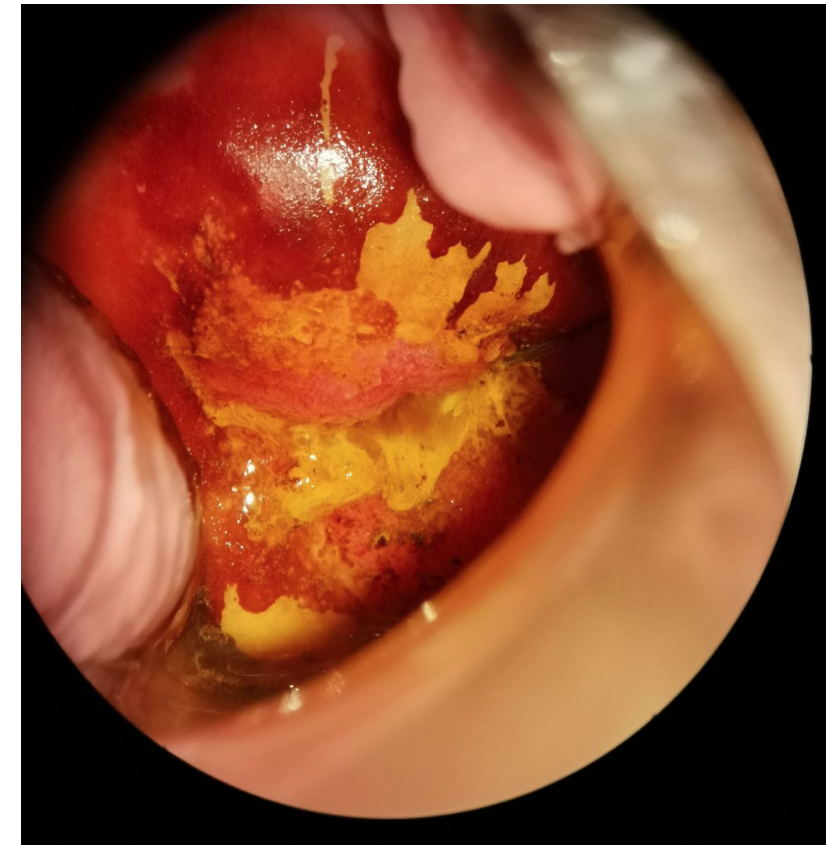
Acetic Acid



Acetic acid green light



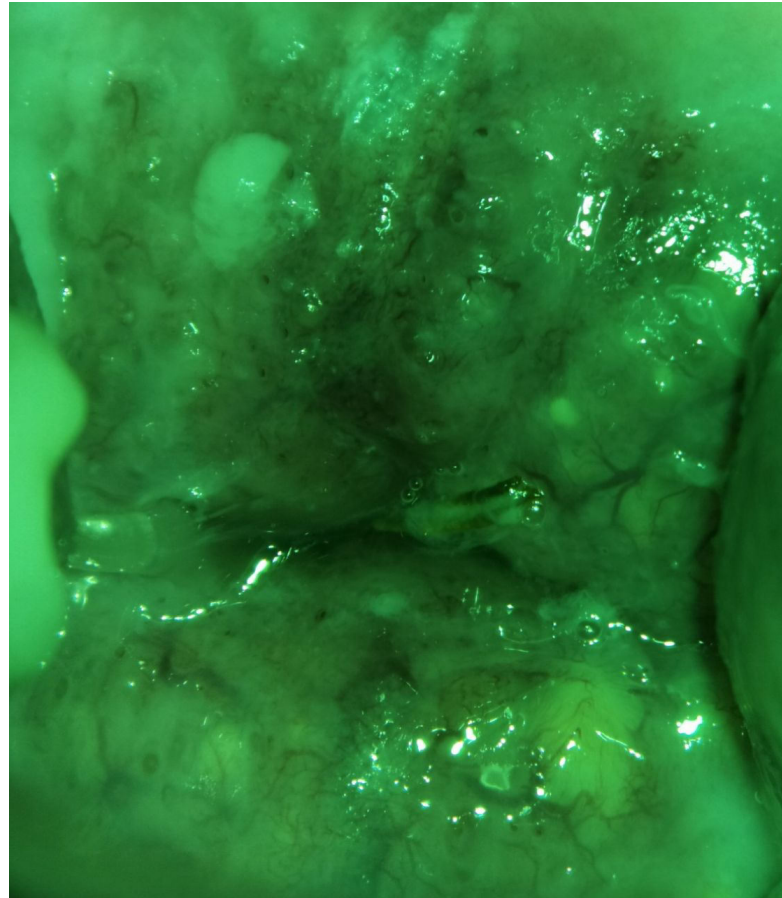
Luguls Iodide



Inspection before Sodium Chloride

Acetic acid, Green light

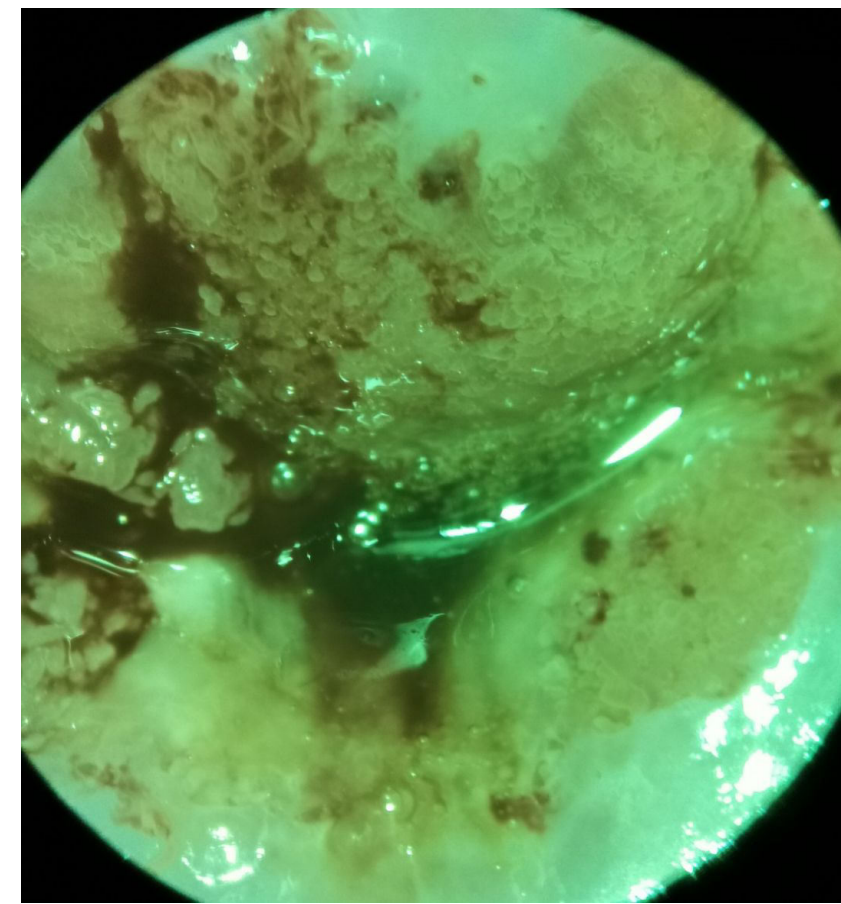
Luguls Iodide



After sodium Chloride

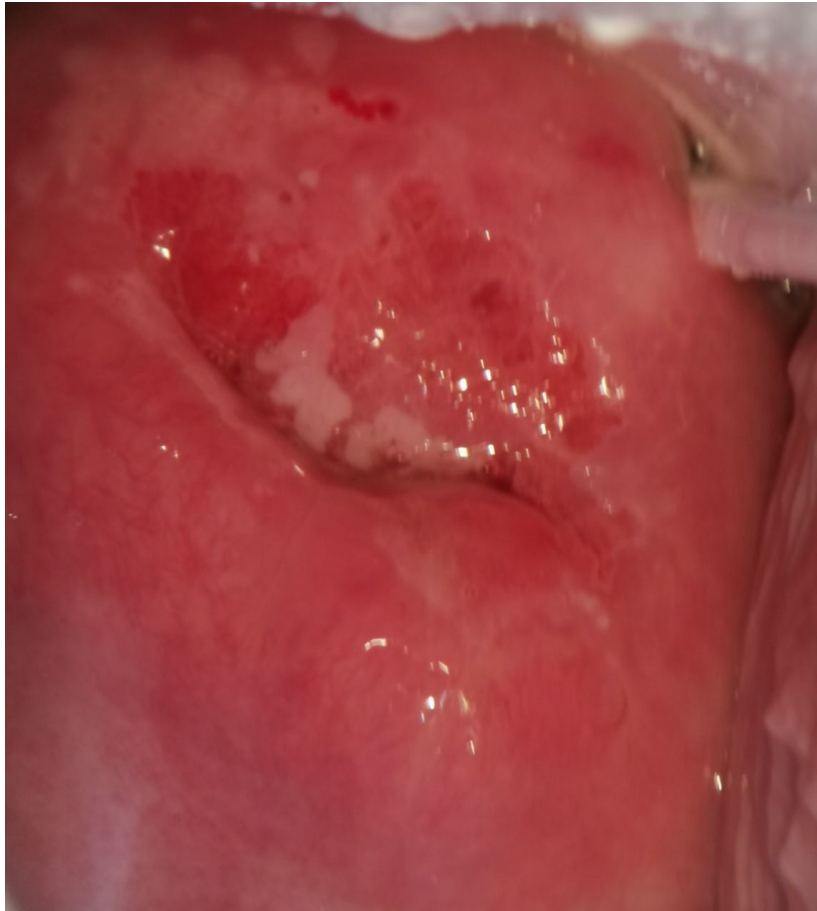
Acetic Acid

Acetic Acid Green Light

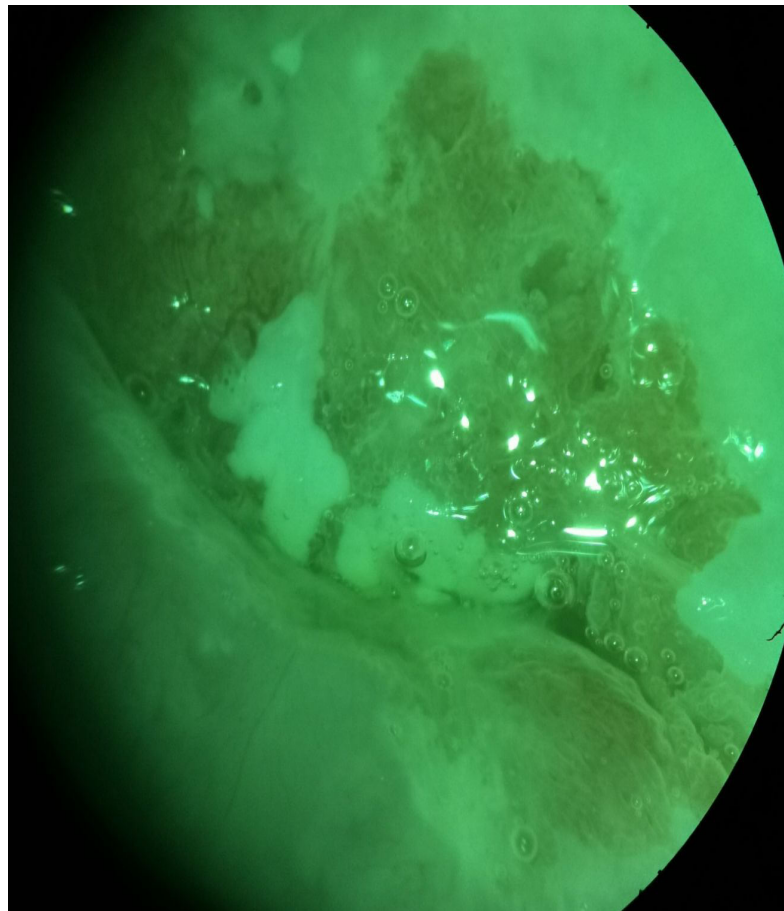


Age 31, Para 0, Cytology HSIL, Biopsy CIN 3, LEEP CIN 3

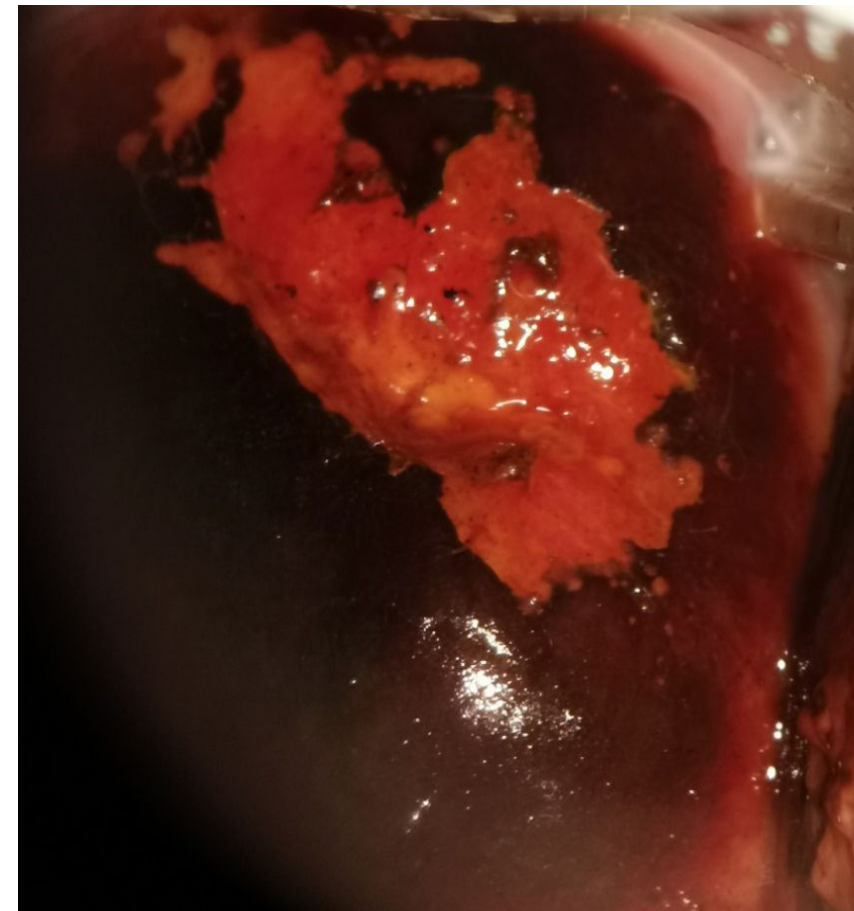
Acetic Acid



Acetic acid Green light

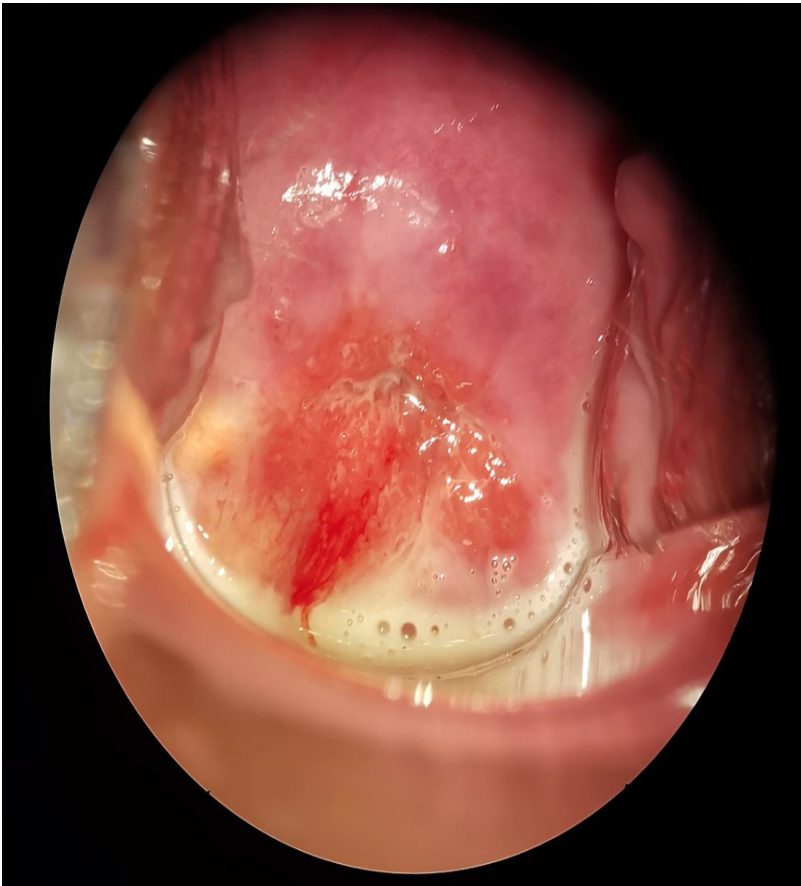


Luguls Iodide



Age 30, Para 0, HPV Pos 16, Cytology ACUS, Biopsy normal, Cervicit

Inspection



Acetic Acid



Luguls Iodide

