



The Only Multi-Purpose RF Ablation System  
In the World with A Variety of Specialized Electrodes

# THE BEST CHOICE FOR RADIO FREQUENCY ABLATION THERAPIES

## Company Introduction

The world's medical device market is showing remarkable growth driven by cutting-edge minimally invasive technology and its industrial value is limitless. Among various medical technologies, radiofrequency ablation is utilized in a wide range of medical fields. Having business agility of a venture company, RF Medical maintains high commitment to R&D and an ability to introduce advanced technologies that can lead to new market creation.

RF Medical is working diligently in an effort to keep pace with advanced medical market. Improving health and safety of the mankind is our top priority and we are dedicated to carry our mission as a leading medical device company through continuous investments in superior workforce and R&D. Moreover, with relentless endeavors to be at the forefront of the market, we strive to address the most pressing needs of our customers.

To further our dedication to improving overall healthcare through pioneering cutting-edge medical devices, RF Medical is committed to develop effective, affordable, and less invasive medical devices. It is our pledge to provide the highest quality products and services to our customers and to achieve improvements on global healthcare.

## Management Philosophy

### ◊ *Focus on R&D*

We always strive to find better treatment modalities for different diseases and invest heavily on research & development to offer more improved devices.

### ◊ *Patient Oriented*

We take patients, the end-user of our products, as our top priority. Because your quality of life matters to us, our main goal is to provide the best treatment options with proven technologies for every patient.

### ◊ *Great Customer Service*

We strive to achieve a high level of customer satisfaction by offering prompt and reliable support to our customers worldwide. With continuous dedication and commitment to provide better services, we welcome any feedbacks and communications that can lead to opportunities to improve customer experiences.

## Business Area

- ◊ Liver RFA
- ◊ Bloodless liver resection
- ◊ Lung RFA
- ◊ Disposable biopsy needle
- ◊ Guiding system for Lung biopsy needle & RFA
- ◊ Varicose vein treatment
- ◊ RF Snoring Treatment
- ◊ Cosmetic skin care & Rejuvenation
- ◊ Bronchial Thermoplasty
- ◊ RFA for bone tumors
- ◊ RF Thyroid
- ◊ RF Myolysis
- ◊ Endometrial Ablation
- ◊ RFA Renal cancer
- ◊ Renal denervation for Hypertension
- ◊ RF Pain Management
- ◊ Treatment for various kinds of tumors

## Awards



Korean World-class Product Award 2012

## Certificates



CE 0120

ISO 9001&2008

ISO 13485

Korea KGMP

Tiwan TFDA

Brazil ANVISA

Russia GOST

## Patents

- ⊕ 10 domestic patents are registered.
- ⊕ 4 International patents are registered (USA, Japan, China, Germany, France, UK, Italy, Spain...)
- ⊕ 10 other patents have been applied for the registration.





## What is Radiofrequency Ablation?

Radiofrequency ablation (RFA) is a medical procedure in which part of the electrical conduction system of the heart, tumor or other dysfunctional tissue is ablated using the heat generated from high frequency alternating current (in the range of 350–500 kHz). RFA is generally conducted in the outpatient setting, using either local anesthetics or conscious sedation anesthesia. Two important advantages of RF current (over previously used low frequency AC or pulses of DC) are that it does not directly stimulate nerves or heart muscle and therefore can often be used without the need for general anesthetic, and that it is very specific for treating the desired tissue without significant collateral damage.

Documented benefits have led to RFA becoming widely used during the last 15 years. RFA procedures are performed under image guidance (such as X-ray screening, CT scan or ultrasound) by an interventional pain specialist (such as an anesthesiologist), interventional radiologist, otolaryngologists, a gastrointestinal or surgical endoscopist, or a cardiac electrophysiologist, a subspecialty of cardiologists.

### Characteristics of RF Medical Generators



- 200W Multifunctional Generator that can cover all the applications using with multi-electrodes. See page 6 and 7 for the detail information.



- 140W Compact Generator that covers the most of the applications using a single electrode. See page 5 for the detail information.



- 40W Dedicated Endovenous Thermal Ablation System Generator. See page 22 and 23 for the detail information.



# 140W Compact Generator RF ABLATION SYSTEM V-1000



## Features

- ⊕ Compatible with various electrode types
- ⊕ Various treatment algorithms in memory
- ⊕ 7" TFT LCD touch screen with smart UI
- ⊕ Advanced Self Test function
- ⊕ Automatic identification and function test of the catheter for the varicose vein mode
- ⊕ Easy PC Monitoring by USB
- ⊕ Easy S/W upgrade and data download by USB
- ⊕ Patient pad Monitoring System
- ⊕ Voice information system

## Specifications

Protection Class	I
Protection Type	BF
Input Power Voltage	AC220V ~ 240V
Input Power Frequency	50/60Hz
Maximum Input Power	300VA
Output RF Frequency	400kHz
Output RF Power	140W
Measuring Temperature	0°C~200°C
Load Impedance Range	Z=25~1000 Ω at400kHz
Alarm Sound	65dB

\*Specifications are subject to change without notice.

\*Available programs : Varicose Vein, Uterine Fibroid, Endometrial Ablation, Thyroid Nodule, Bone Tumor, and Snoring.



## 200W Multifunctional Generator RF ABLATION SYSTEM M-3004



### Features

- Switching Control System for larger ablation sizes
- Compatible with various electrode types
- Various treatment algorithms in memory
- 7" TFT LCD touch screen with smart UI
- Advanced Self Test function
- Automatic identification and function test of the catheter for the varicose vein mode
- Easy S/W upgrade and data download by USB(Front)
- Easy PC Monitoring by USB(Back)
- Patient pad Monitoring System
- 3 channels of temperature sensing at the same time
- Monopolar and Bipolar electrode can work together
- Voice information system

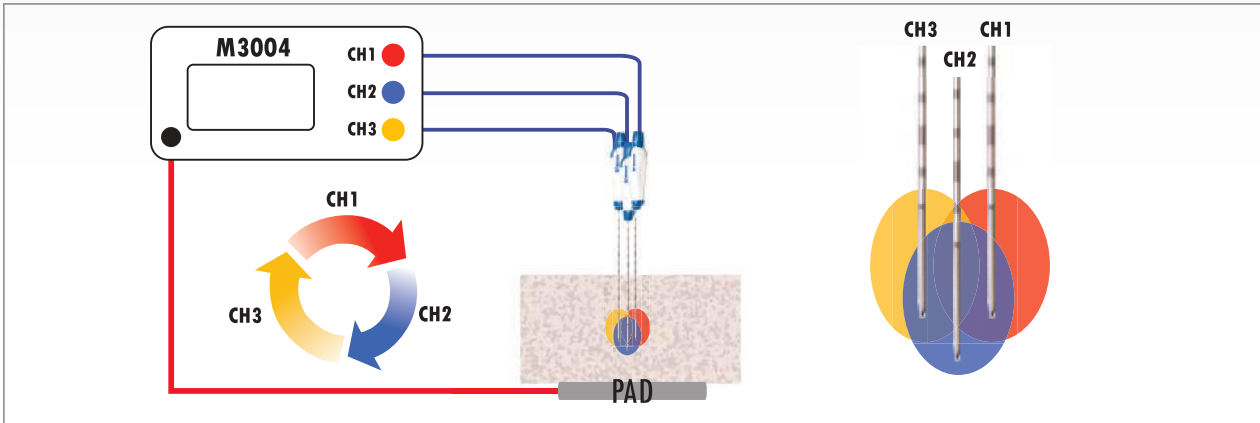
### Specifications

Protection Class	I
Protection Type	BF
Input Power Voltage	AC220V
Input Power Frequency	50/60Hz
Maximum Input Power	410VA
Output RF Frequency	400kHz
Output RF Power	200W
Measuring Temperature	0°C~200°C
Load Impedance Range	Z=25~1000 Ω at400kHz
Alarm Sound	65dB

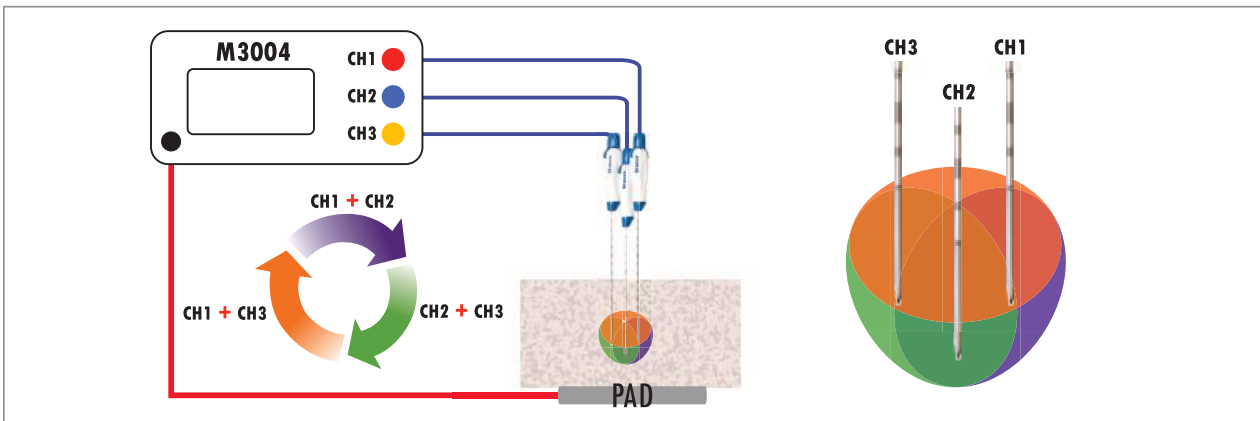
\*Specifications are subject to change without notice.

## Needle switching

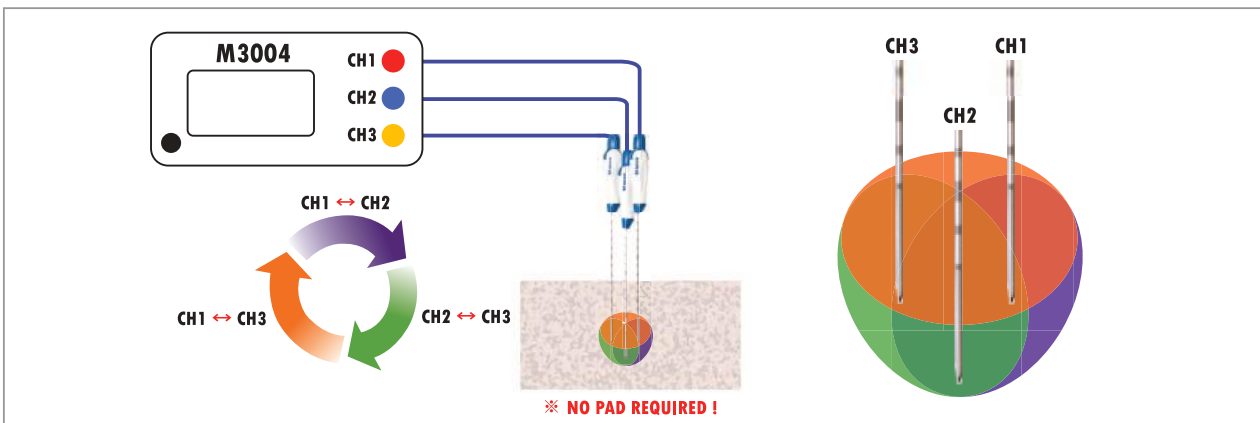
### SINGLE MONOPOLAR



### DUAL MONOPOLAR



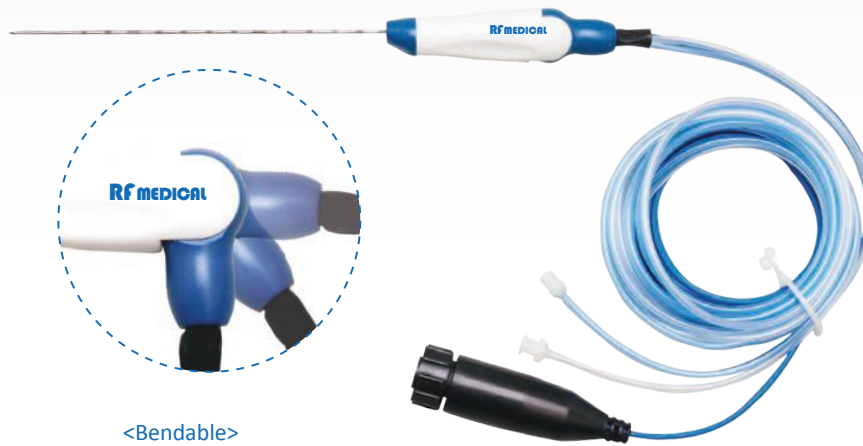
### BIPOLAR





# Big-Tip (Internally Cooled Electrode)

*Fast, Safe, Regular shape*



<Bendable>



<Single>



<Cluster>



<Duo>

## Specifications

Product Code	Diameter	Length	Exposure	Type	Application
BT 1005(B)	Ø1.5 mm	10 cm	0.5 cm	Single Cooled Tip	For Liver Cancer, Lung Cancer, Kidney Cancer, and Breast Cancer
~	Ø1.5 mm	10 cm	5mm Intervals		
BT 1030(B)	Ø1.5 mm	10 cm	3.0 cm		
BT 1510(B)	Ø1.5 mm	15 cm	1.0 cm		
~	Ø1.5 mm	15 cm	5mm Intervals		
BT 1540(B)	Ø1.5 mm	15 cm	4.0 cm		
BT 2020(B)	Ø1.5 mm	20 cm	2.0 cm		
BT 2025(B)	Ø1.5 mm	20 cm	2.5 cm		
BT 2030(B)	Ø1.5 mm	20 cm	3.0 cm		
BT 2040(B)	Ø1.5 mm	20 cm	4.0 cm		
BTW 1520(B)	Ø1.8 mm	15 cm	2.0 cm		
BTW 1525(B)	Ø1.8 mm	15 cm	2.5 cm		
BTW 1530(B)	Ø1.8 mm	15 cm	3.0 cm		
BTW 2020(B)	Ø1.8 mm	20 cm	2.0 cm		
BTW 2025(B)	Ø1.8 mm	20 cm	2.5 cm		
BTW 2030(B)	Ø1.8 mm	20 cm	3.0 cm		
BTD 1020	Ø1.5 mm	10 cm	2.0 cm	Duo Cooled Tip	
~	Ø1.5 mm	10 cm	5mm Intervals		
BTD 1035	Ø1.5 mm	10 cm	3.5 cm		
BTD 1520	Ø1.5 mm	15 cm	2.0 cm		
~	Ø1.5 mm	15 cm	5mm Intervals		
BTD 1535	Ø1.5 mm	15 cm	3.5 cm		
BTD 2020	Ø1.5 mm	20 cm	2.0 cm		
~	Ø1.5 mm	20 cm	5mm Intervals		
BTD 2035	Ø1.5 mm	20 cm	3.5 cm	Cluster Cooled Tip	
BTC 1025	Ø1.5 mm	10 cm	2.5 cm		
BTC 1525	Ø1.5 mm	15 cm	2.5 cm		
BTC 2025	Ø1.5 mm	20 cm	2.5 cm		
BTC 2525	Ø1.5 mm	25 cm	2.5 cm		

\*Big-Tip has two types of handle. Standard type(BT 1005, BT 1020, ...) and Bendable type(BT 1005B, BT 1020B, ...)





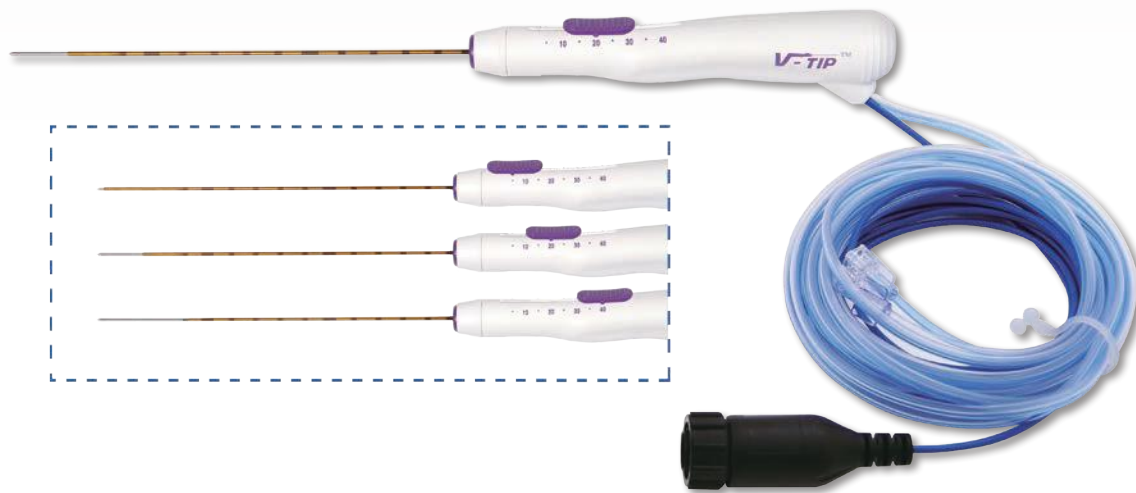
# V-Tip™ (Variable Exposure Length Tip)

## Fast, Safe, Regular shape

For liver cancer, lung cancer, kidney cancer, osteoid osteoma, uterine fibroid and adenomyosis.

You don't need to keep many different models of electrodes in stock!

You don't need to use 2 needles for different sizes of tumors in one patient!



## Features

- ⊞ Internal cooling system prevents contiguous tissue from charring and thus widens ablation zone.
- ⊞ Smoothed out raised edge of insulation sheath for easier inserting and repositioning.
- ⊞ Angled connection of the tubings & cable to the handle is quite useful for percutaneous approach under C.T guidance.

## Specifications

Product Code	Diameter	Length	Exposure	Type	Application
VCT 10XXB	Ø1.5 mm	10 cm	0.5 cm ~ 4.0 cm	Variable Exposure, Cooled Tip	For Liver Cancer, Lung Cancer, Kidney Cancer, Osteoid Osteoma, Uterine Fibroids, and Adenomyosis
VCT 15XXB	Ø1.5 mm	15 cm	0.5 cm ~ 4.0 cm		
VCT 20XXB	Ø1.5 mm	20 cm	0.5 cm ~ 4.0 cm		
VCT 25XXB	Ø1.5 mm	25 cm	0.5 cm ~ 4.0 cm		
VCT 30XXB	Ø1.5 mm	30 cm	0.5 cm ~ 4.0 cm		
VCT 35XXB	Ø1.5 mm	35 cm	0.5 cm ~ 4.0 cm		
VCTM 10XXB	Ø1.65 mm	10 cm	0.5 cm ~ 4.0 cm		
VCTM 15XXB	Ø1.65 mm	15 cm	0.5 cm ~ 4.0 cm		
VCTM 20XXB	Ø1.65 mm	20 cm	0.5 cm ~ 4.0 cm		
VCTM 25XXB	Ø1.65 mm	25 cm	0.5 cm ~ 4.0 cm		
VCTM 30XXB	Ø1.65 mm	30 cm	0.5 cm ~ 4.0 cm		
VCTM 35XXB	Ø1.65 mm	35 cm	0.5 cm ~ 4.0 cm		
VCTW 10XXB	Ø1.8 mm	10 cm	0.5 cm ~ 4.0 cm		
VCTW 15XXB	Ø1.8 mm	15 cm	0.5 cm ~ 4.0 cm		
VCTW 20XXB	Ø1.8 mm	20 cm	0.5 cm ~ 4.0 cm		
VCTW 25XXB	Ø1.8 mm	25 cm	0.5 cm ~ 4.0 cm		
VCTW 30XXB	Ø1.8 mm	30 cm	0.5 cm ~ 4.0 cm		
VCTW 35XXB	Ø1.8 mm	35 cm	0.5 cm ~ 4.0 cm		

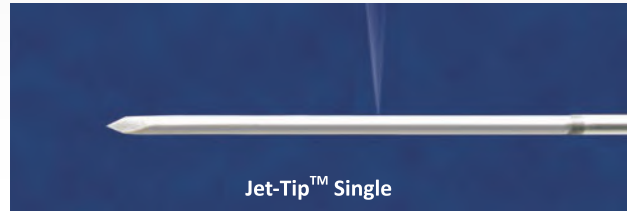


# Jet-Tip™ (Cooled Wet Tip)

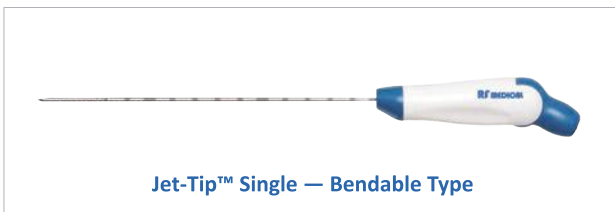
*New Horizon of straight needle! Now Straight needle also can make large ablation size.*



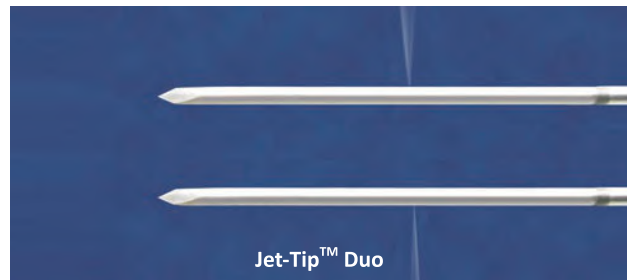
Jet-Tip™ Single — Straight Type



Jet-Tip™ Single



Jet-Tip™ Single — Bendable Type



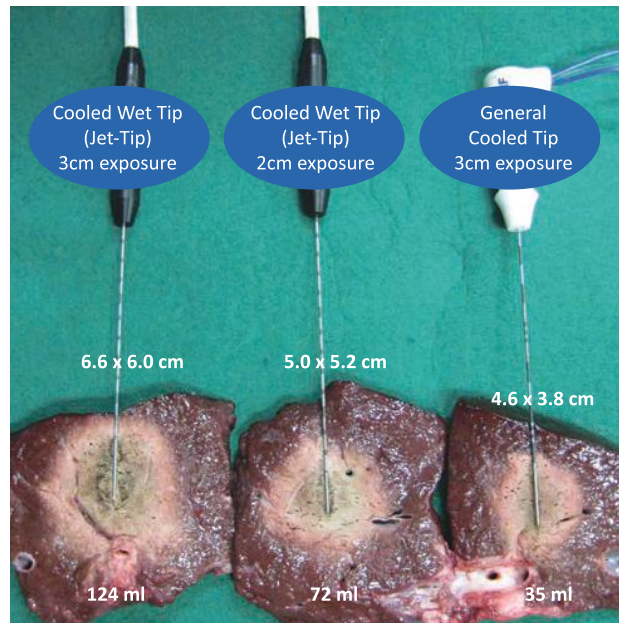
Jet-Tip™ Duo



Jet-Tip™ Duo

## Features

- Ideal straight needle by combining Internally Cooled needle and Saline Perfusion needle.
- Jet-Tip™(Cooled Wet Tip) is designed to prevent contiguous tissue from charring and enhances frictional heat and thus maximizes ablation zone.
- Can minimize irregular ablation shape by minimized saline perfusion volume.
- Smoothed out raised edge of insulation sheath for easier inserting and repositioning.



## References

1. Percutaneous radiofrequency ablation using internally cooled wet electrodes for treatment of colorectal liver metastases. Clin Radiol. 2012 Feb;67(2):122-7. Epub 2011 Sep 8.
2. Percutaneous radiofrequency ablation using internally cooled wet electrodes for the treatment of hepatocellular carcinoma. AJR Am J Roentgenol. 2012 Feb;198(2):471-6.
3. Percutaneous Radiofrequency Ablation with Internally Cooled versus Internally Cooled Wet Electrodes for Small Subphrenic Hepatocellular Carcinomas. J Vasc Interv Radiol. 2013 Mar;24(3)351-6. Epub 2013 Feb 4.



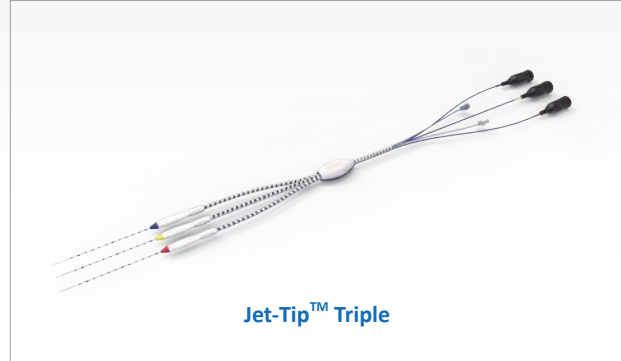
## Specifications

Product Code	Diameter	Length	Exposure	Type	Application
JET 0710T(B)	Ø1.2 mm	7 cm	1.0 cm	Single Cooled Wet Tip	For Thyroid Nodules
JET 0715T(B)	Ø1.2 mm	7 cm	1.5 cm		
JET 1010(B)	Ø1.5 mm	10 cm	1.0 cm		
JET 1015(B)	Ø1.5 mm	10 cm	1.5 cm		
JET 1510(B)	Ø1.5 mm	15 cm	1.0 cm		
~	Ø1.5 mm	15 cm	5mm Intervals		
JET 1540(B)	Ø1.5 mm	15 cm	4.0 cm		
JET 2010(B)	Ø1.5 mm	20 cm	1.0 cm		
~	Ø1.5 mm	20 cm	5mm Intervals		
JET 2040(B)	Ø1.5 mm	20 cm	4.0 cm		
JET 2505(B)	Ø1.5 mm	25 cm	0.5 cm		
~	Ø1.5 mm	25 cm	5mm Intervals		
JET 2540(B)	Ø1.5 mm	25 cm	4.0 cm		
JET 3005(B)	Ø1.5 mm	30 cm	0.5 cm		
~	Ø1.5 mm	30 cm	5mm Intervals		
JET 3040(B)	Ø1.5 mm	30 cm	4.0 cm		
JET 1520Q(B)	Ø1.8 mm	15 cm	2.0 cm		
~	Ø1.8 mm	15 cm	5mm Intervals		
JET 1540Q(B)	Ø1.8 mm	15 cm	4.0 cm		
JET 2020Q(B)	Ø1.8 mm	20 cm	2.0 cm		
~	Ø1.8 mm	20 cm	5mm Intervals		
JET 2040Q(B)	Ø1.8 mm	20 cm	4.0 cm		
JET 2520Q(B)	Ø1.8 mm	25 cm	2.0 cm		
~	Ø1.8 mm	25 cm	5mm Intervals		
JET 2540Q(B)	Ø1.8 mm	25 cm	4.0 cm		
JET 3020Q(B)	Ø1.8 mm	30 cm	2.0 cm		
~	Ø1.8 mm	30 cm	5mm Intervals		
JET 3040Q(B)	Ø1.8 mm	30 cm	4.0 cm		
JET 1520X(B)	Ø2.0 mm	15 cm	2.0 cm		
~	Ø2.0 mm	15 cm	5mm Intervals		
JET1540X(B)	Ø2.0 mm	15 cm	4.0 cm		
JET 2020X(B)	Ø2.0 mm	20 cm	2.0 cm		
~	Ø2.0 mm	20 cm	5mm Intervals		
JET 2040X(B)	Ø2.0 mm	20 cm	4.0 cm		
JET 2520X(B)	Ø2.0 mm	25 cm	2.0 cm		
~	Ø2.0 mm	25 cm	5mm Intervals		
JET 2540X(B)	Ø2.0 mm	25 cm	4.0 cm		
JET 3020X(B)	Ø2.0 mm	30 cm	2.0 cm		
~	Ø2.0 mm	30 cm	5mm Intervals		
JET 3040X(B)	Ø2.0 mm	30 cm	4.0 cm		
JETC 1510	Ø1.5 mm	15 cm	1.0 cm	Cluster Cooled Wet Tip	For Liver Cancer, Kidney Cancer, and Lung Cancer
JETC 1515	Ø1.5 mm	15 cm	1.5 cm		
JETC 2010	Ø1.5 mm	20 cm	1.0 cm		
JETC 2015	Ø1.5 mm	20 cm	1.5 cm		
JETC 2510	Ø1.5 mm	25 cm	1.0 cm		
JETC 2515	Ø1.5 mm	25 cm	1.5 cm		

\*Jet-Tip has two types of handle. Standard type(JET 0710T, JET 0715T, ...) and Bendable type(JET 0710TB, JET 0715TB, ...)



# Jet-Tip™ Twins & Jet-Tip™ Triple



## Features of Jet-Tip™ Twins

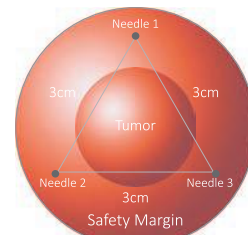
- Makes a larger ablation size (up to 7cm)
- Much easier to use than cluster electrode
- Less traumatic than cluster electrode
- Highly effective in treating Portal Vein Tumor Thrombus

## Features of the Jet-Tip™ Triple

- Makes the largest ablation size in the world (with RF)
- Can use with monopolar and/or bipolar needle switching
- With bipolar needle switching, “No-touch technique” is possible
- No heat-sync effect

## Characteristics of Jet-Tip™ Twins & Triple

- Independent temperature sensor and RF cable for each needle
- United cooling system tubes
- Needle switching possible



No-Touch Technique

## Specifications

Product Code	Diameter	Length	Exposure	Type	Application
JET-T 1005~1040	Ø1.5 mm	10 cm	0.5~4.0 cm (5mm Intervals)	Jet-Tip™ Twins	For Liver Cancer, Kidney Cancer, and Lung Cancer
JET-T 1505~1540	Ø1.5 mm	15 cm	0.5~4.0 cm (5mm Intervals)		
JET-T 2005~2040	Ø1.5 mm	20 cm	0.5~4.0 cm (5mm Intervals)		
JET-T 2505~2540	Ø1.5 mm	25 cm	0.5~4.0 cm (5mm Intervals)		
JET-T 3005~3040	Ø1.5 mm	30 cm	0.5~4.0 cm (5mm Intervals)		
JET-T 3505~3540	Ø1.5 mm	35 cm	0.5~4.0 cm (5mm Intervals)		
JET-T 1005Q~1040Q	Ø1.8 mm	10 cm	0.5~4.0 cm (5mm Intervals)		
JET-T 1505Q~1540Q	Ø1.8 mm	15 cm	0.5~4.0 cm (5mm Intervals)		
JET-T 2005Q~2040Q	Ø1.8 mm	20 cm	0.5~4.0 cm (5mm Intervals)		
JET-T 2505Q~2540Q	Ø1.8 mm	25 cm	0.5~4.0 cm (5mm Intervals)		
JET-T 3005Q~3040Q	Ø1.8 mm	30 cm	0.5~4.0 cm (5mm Intervals)		
JET-T 3505Q~3540Q	Ø1.8 mm	35 cm	0.5~4.0 cm (5mm Intervals)		
JET-T 1005X~1040X	Ø2.0 mm	10 cm	0.5~4.0 cm (5mm Intervals)		
JET-T 1505X~1540X	Ø2.0 mm	15 cm	0.5~4.0 cm (5mm Intervals)		
JET-T 2005X~2040X	Ø2.0 mm	20 cm	0.5~4.0 cm (5mm Intervals)		
JET-T 2505X~2540X	Ø2.0 mm	25 cm	0.5~4.0 cm (5mm Intervals)		
JET-T 3005X~3040X	Ø2.0 mm	30 cm	0.5~4.0 cm (5mm Intervals)		
JET-T 3505X~3540X	Ø2.0 mm	35 cm	0.5~4.0 cm (5mm Intervals)		
JET-TRI 0000~0000	Available in the same specifications as the Jet-Tip™ Twins			Jet-Tip™ Triple	

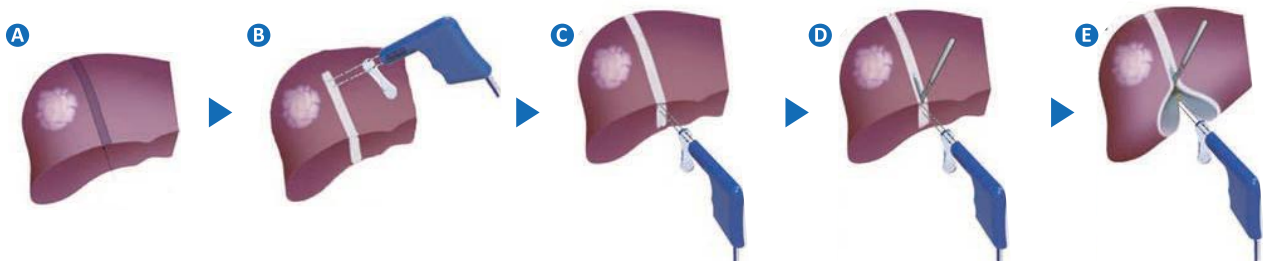
\* Twins and Triple electrodes are also available in the Big-Tip series.



# Duo Bipolar Electrode for Bloodless Liver Resection



## Bloodless Liver Resection



## Features

- ⊗ Blood loss is reduced significantly.
- ⊗ Procedure time is decreased a lot.
- ⊗ Possibilities for blood transfusions are declined remarkably.
- ⊗ Functional portions of cirrhotic liver can be spared.
- ⊗ Occurrence of liver failure and bile leakage can be decreased prominently because of blood loss reduction and functional tissue sparing.

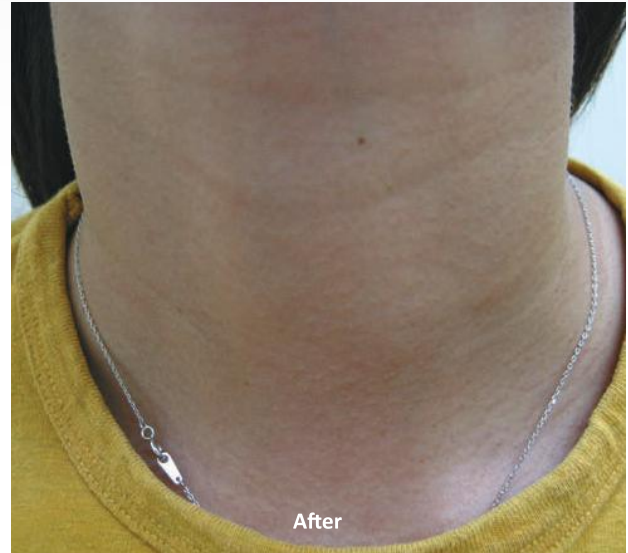
## Specifications

Product Code	Diameter	Length	Exposure	Type	Application
DBT 1220	Ø1.5 mm	12 cm	2.0 cm	Dual Tip, Bipolar	Bloodless Liver Resection
DBT 1225	Ø1.5 mm	12 cm	2.5 cm		
DBT 1230	Ø1.5 mm	12 cm	3.0 cm		
DBT 1235	Ø1.5 mm	12 cm	3.5 cm		
DBT 1240	Ø1.5 mm	12 cm	4.0 cm		

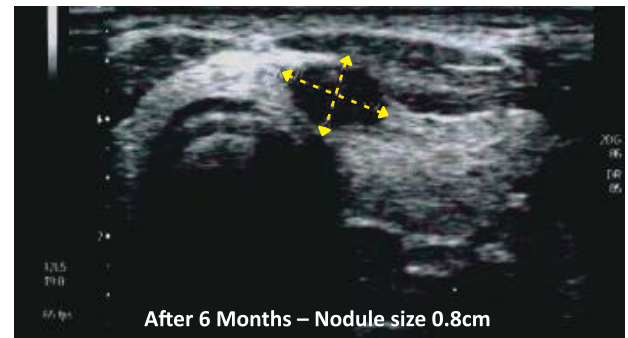
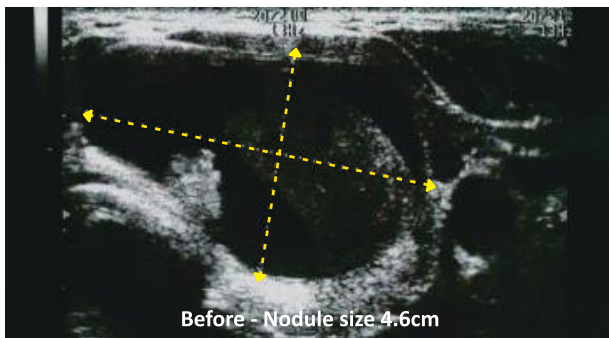


## RF Ablation of Thyroid

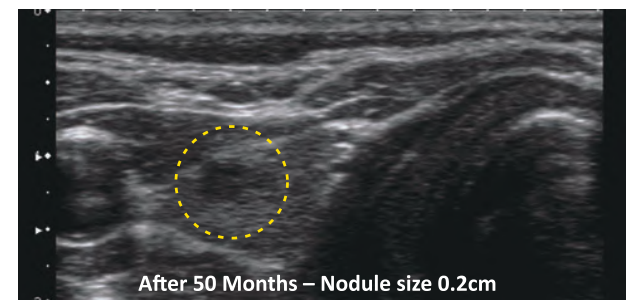
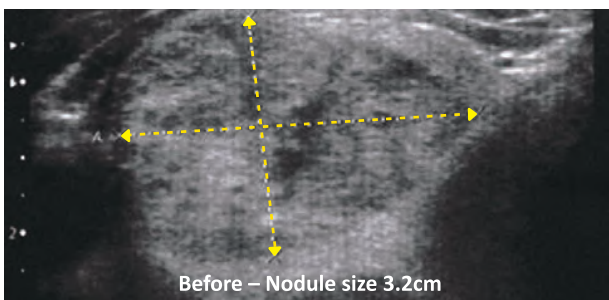
*Non-toxic benign thyroid nodules, autonomously functioning thyroid nodules, thyroglossal duct cyst, and venous malformation in the neck.*



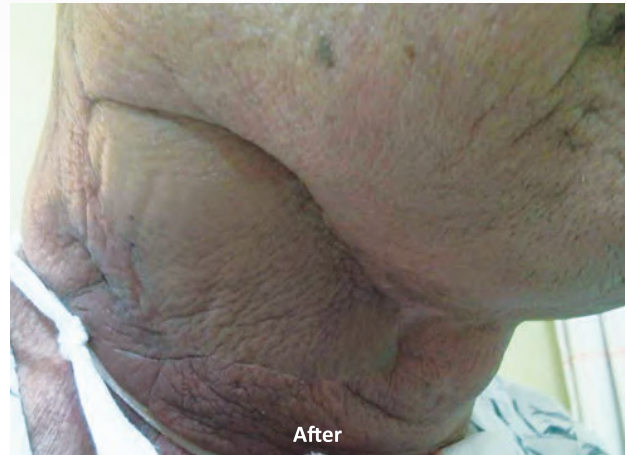
### Thyroid Nodule



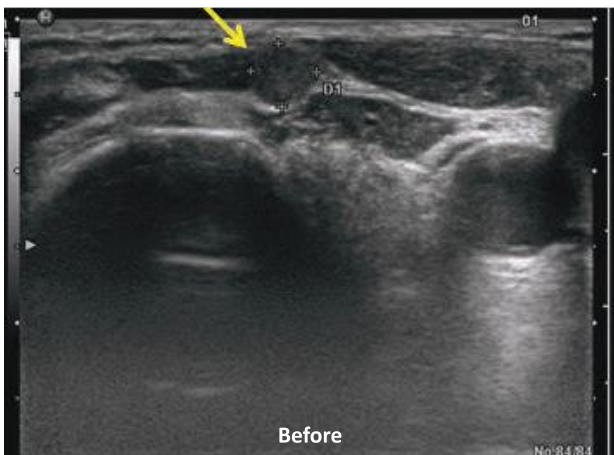
### Thyroid Nodule – Solid mass



### Recurrent Tongue Cancer



### Recurrent Tongue Cancer



### Advantages of Thyroid RFA

- No scar
- Minimal Invasive
- No admission
- Quick recovery
- Easy procedure
- No complication (Parathyroid)
- Local anesthesia
- Good result, easy re-therapy
- No hypothyroidism



# RF Ablation of Thyroid

## Clinical Results

	6 months	1 year	2 year	3 year	Last
Total	70.3 ± 17.2	89.9 ± 10.2	90.1 ± 10.1	90.7 ± 15.8	93.5 ± 11.7
P value	< 0.001	< 0.999	< 0.001	< 0.001	
Solidity ≤ 50%	80.9 ± 14.6	93.6 ± 8.8	93.1 ± 8.9	92.0 ± 20.3	96.0 ± 8.8
Solidity > 50%	67.6 ± 16.8	87.8 ± 10.4	88.4 ± 10.4	90.0 ± 13.0	92.0 ± 12.9
P value	< 0.001	0.003	0.021	0.002	0.002

126 benign non-functioning thyroid nodules of 111 patients  
 Mean follow-up periods : 49.4±13.6 months  
 Mean No. of sessions : 2.2±1.4  
 Mean volume reduction : 93.4±11.7%  
 Therapeutic success rate : 98.4%(124/126)  
 Overall complication rate: 3.6%(4/111)  
 Overall recurrence rate : 5.6%(7/126)  
 Regrowth defined as a > 50% increase in nodule volume compared with the previous FU volume.

Radiofrequency ablation of benign nonfunctioning thyroid nodules: 4-year follow-up results in 111 patients. Eur Radiol. 2013 Apr;23(4):1044-9

## Complications

Multicenter Study(13 institutions), 1459 patients, 1543 nodules, 48 complications(3.3%), 20 major complications(1.4%)

The Major	The Minor
<ul style="list-style-type: none"> <li>• Voice changes ( n = 15)</li> <li>• Brachial plexus injury ( n = 1)</li> <li>• Tumor rupture ( n = 3)</li> <li>• Permanent hypothyroidism ( n = 1)</li> </ul>	<ul style="list-style-type: none"> <li>• Hematoma ( n = 15)</li> <li>• Skin burn ( n = 4)</li> <li>• Vomiting ( n = 9)</li> </ul>

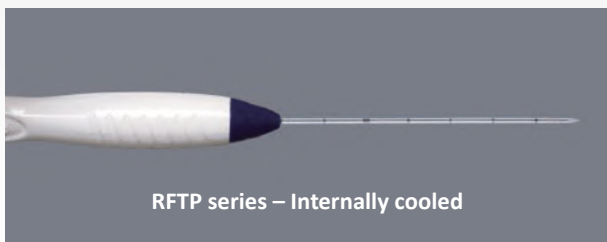
All patients recovered spontaneously except for one with permanent hypothyroidism and one who underwent surgery.

Complications Encountered in the treatment of benign thyroid nodules with US-guided radiofrequency ablation: A Multicenter Study. Radiology. 2012 Jan; 262(1):335-42

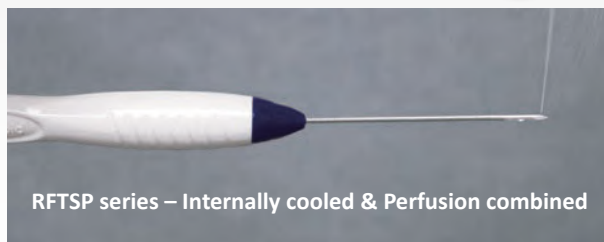




# Specialized Thyroid RF Electrode



RFTP series – Internally cooled



RFTSP series – Internally cooled & Perfusion combined

## Specifications

Product Code	Diameter	Length	Exposure	Type	Application		
RFTP 0703LN	Ø1.0 mm	7 cm	0.3 cm	Cooled Tip	For Lymph Node		
RFTP 0705LN	Ø1.0 mm	7 cm	0.5 cm				
RFTP 0707LN	Ø1.0 mm	7 cm	0.7 cm				
RFTP 0710LN	Ø1.0 mm	7 cm	1.0 cm				
RFTP 0715LN	Ø1.0 mm	7 cm	1.5 cm				
RFTP 0720LN	Ø1.0 mm	7 cm	2.0 cm				
RFTP 1003LN	Ø1.0 mm	10 cm	0.3 cm				
RFTP 1005LN	Ø1.0 mm	10 cm	0.5 cm				
RFTP 1007LN	Ø1.0 mm	10 cm	0.7 cm				
RFTP 1010LN	Ø1.0 mm	10 cm	1.0 cm				
RFTP 1015LN	Ø1.0 mm	10 cm	1.5 cm				
RFTP 1020LN	Ø1.0 mm	10 cm	2.0 cm				
RFTP 0707HLN	Ø1.0 mm	7 cm	0.7 cm	Cooled Tip, Half Direction	For Lymph Node		
RFTP 0710HLN	Ø1.0 mm	7 cm	1.0 cm				
RFTP 0715HLN	Ø1.0 mm	7 cm	1.5 cm				
RFTP 1007HLN	Ø1.0 mm	10 cm	0.7 cm				
RFTP 1010HLN	Ø1.0 mm	10 cm	1.0 cm				
RFTP 1015HLN	Ø1.0 mm	10 cm	1.5 cm				
RFTSP 0703LN	Ø1.0 mm	7 cm	0.3 cm	Cooled Wet Tip		For Lymph Node	
RFTSP 0705LN	Ø1.0 mm	7 cm	0.5 cm				
RFTSP 0707LN	Ø1.0 mm	7 cm	0.7 cm				
RFTSP 0710LN	Ø1.0 mm	7 cm	1.0 cm				
RFTSP 0715LN	Ø1.0 mm	7 cm	1.5 cm	Cooled Tip			For Thyroid Nodule
RFTP 0703N	Ø1.2 mm	7 cm	0.3 cm				
RFTP 0705N	Ø1.2 mm	7 cm	0.5 cm				
RFTP 0707N	Ø1.2 mm	7 cm	0.7 cm				
RFTP 0710N	Ø1.2 mm	7 cm	1.0 cm				
RFTP 0715N	Ø1.2 mm	7 cm	1.5 cm				
RFTP 0720N	Ø1.2 mm	7 cm	2.0 cm				
RFTP 1003N	Ø1.2 mm	10 cm	0.3 cm				
RFTP 1005N	Ø1.2 mm	10 cm	0.5 cm				
RFTP 1007N	Ø1.2 mm	10 cm	0.7 cm				
RFTP 1010N	Ø1.2 mm	10 cm	1.0 cm				
RFTP 1015N	Ø1.2 mm	10 cm	1.5 cm				
RFTP 1020N	Ø1.2 mm	10 cm	2.0 cm				
RFTP 0703HN	Ø1.2 mm	7 cm	0.3 cm	Cooled Tip, Half Direction	For Thyroid Nodule		
RFTP 0705HN	Ø1.2 mm	7 cm	0.5 cm				
RFTP 0707HN	Ø1.2 mm	7 cm	0.7 cm				
RFTP 0710HN	Ø1.2 mm	7 cm	1.0 cm				
RFTP 0715HN	Ø1.2 mm	7 cm	1.5 cm				
RFTP 1007HN	Ø1.2 mm	10 cm	0.7 cm				
RFTP 1010HN	Ø1.2 mm	10 cm	1.0 cm				
RFTP 1015HN	Ø1.2 mm	10 cm	1.5 cm	Cooled Wet Tip		For Thyroid Nodule	
RFTSP 0703N	Ø1.2 mm	7 cm	0.3 cm				
RFTSP 0707N	Ø1.2 mm	7 cm	0.7 cm				
RFTSP 0715N	Ø1.2 mm	7 cm	1.5 cm	Cooled Tip			For Thyroid Nodule



# MRI-Guided Nitinol Electrode

MRI-Guided Nitinol electrode that allows for precise ablations.



## Features

- ⊕ High level of control offers accurate electrode placement and precise ablation zone.
- ⊕ Providing safe and potentially effective treatment.
- ⊕ Colorful Real-time monitoring of ablation progress.
- ⊕ Variable exposure length.
- ⊕ Also available in JET-Ni version that offers substantially larger ablation volumes.
- ⊕ Early detection with MRI and early treatment with VCT-Ni electrodes.

## Specifications

Product Code	Diameter	Length	Exposure	Type	Application
VCT 10XXBNI	Ø1.5 mm	10 cm	0.5~4.0 cm	Variable Exposure, Cooled Tip	For Liver Cancer, Lung Cancer, Kidney Cancer, Osteoid Osteoma, Uterine Fibroids and Adenomyosis
VCT 15XXBNI	Ø1.5 mm	15 cm	0.5~4.0 cm		
VCT 20XXBNI	Ø1.5 mm	20 cm	0.5~4.0 cm		
VCT 25XXBNI	Ø1.5 mm	25 cm	0.5~4.0 cm		
VCT 30XXBNI	Ø1.5 mm	30 cm	0.5~4.0 cm		
VCT 35XXBNI	Ø1.5 mm	35 cm	0.5~4.0 cm		
VCTW 10XXBNI	Ø1.8 mm	10 cm	0.5~4.0 cm		
VCTW 15XXBNI	Ø1.8 mm	15 cm	0.5~4.0 cm		
VCTW 20XXBNI	Ø1.8 mm	20 cm	0.5~4.0 cm		
VCTW 25XXBNI	Ø1.8 mm	25 cm	0.5~4.0 cm		
VCTW 30XXBNI	Ø1.8 mm	30 cm	0.5~4.0 cm		
VCTW 35XXBNI	Ø1.8 mm	35 cm	0.5~4.0 cm		
JET 10**(B)Ni	Ø1.5 mm	10 cm	** : 0.5~4.0 cm	Single Cooled Wet Tip	For Liver Cancer, Kidney Cancer and Lung Cancer
JET 15**(B)Ni	Ø1.5 mm	15 cm	** : 0.5~4.0 cm		
JET 20**(B)Ni	Ø1.5 mm	20 cm	** : 0.5~4.0 cm		
JET 25**(B)Ni	Ø1.5 mm	25 cm	** : 0.5~4.0 cm		
JET 30**(B)Ni	Ø1.5 mm	30 cm	** : 0.5~4.0 cm		
JET 10**Q(B)Ni	Ø1.8 mm	10 cm	** : 0.5~4.0 cm		
JET 15**Q(B)Ni	Ø1.8 mm	15 cm	** : 0.5~4.0 cm		
JET 20**Q(B)Ni	Ø1.8 mm	20 cm	** : 0.5~4.0 cm		
JET 25**Q(B)Ni	Ø1.8 mm	25 cm	** : 0.5~4.0 cm		
JET 30**Q(B)Ni	Ø1.8 mm	30 cm	** : 0.5~4.0 cm		
JET 10**X(B)Ni	Ø2.0 mm	10 cm	** : 0.5~4.0 cm		
JET 15**X(B)Ni	Ø2.0 mm	15 cm	** : 0.5~4.0 cm		
JET 20**X(B)Ni	Ø2.0 mm	20 cm	** : 0.5~4.0 cm		
JET 25**X(B)Ni	Ø2.0 mm	25 cm	** : 0.5~4.0 cm		
JET 30**X(B)Ni	Ø2.0 mm	30 cm	** : 0.5~4.0 cm		

\*Jet Tip has two types of handle. Standard type(JET 1005Ni, JET 1020Ni, ...) and Bendable type(JET 1005BNI, JET 1020BNI, ...)

\*Jet Tip's exposure is 5mm intervals(JET-1005BNI, JET-1010BNI, ...)



# Biopsy Needle



Semi-automatic Biopsy System: Excellent ultrasound and CT visibility with a state-of-art echogenic technology



<Biopsy Needle>

## Features

- Lightweight and ergonomic grip design.
- A specialized spring for each notch enables the maximum firing and consistent sample delivery.

## Specifications

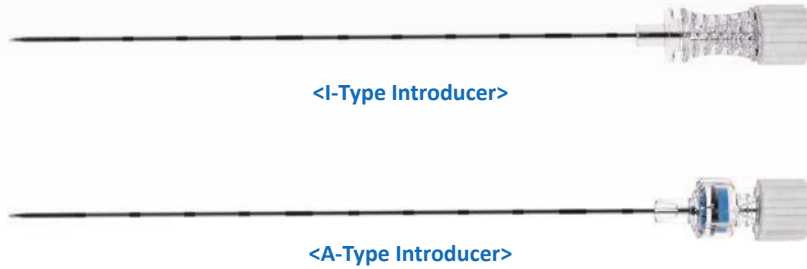
Product Code			Product Code			Product Code		
Model	Specification	Throw	Model	Specification	Throw	Model	Specification	Throw
SA1407S	14G * 7cm	10 mm	SA1613L	16G * 13cm	18 mm	SA1824S	18G * 24cm	10 mm
SA1407L	14G * 7cm	18 mm	SA1619S	16G * 19cm	10 mm	SA1824L	18G * 24cm	18 mm
SA1413S	14G * 13cm	10 mm	SA1619L	16G * 19cm	18 mm	SA2007S	20G * 7cm	10 mm
SA1413L	14G * 13cm	18 mm	SA1624S	16G * 24cm	10 mm	SA2007L	20G * 7cm	18 mm
SA1419S	14G * 19cm	10 mm	SA1624L	16G * 24cm	18 mm	SA2013S	20G * 13cm	10 mm
SA1419L	14G * 19cm	18 mm	SA1807S	18G * 7cm	10 mm	SA2013L	20G * 13cm	18 mm
SA1424S	14G * 24cm	10 mm	SA1807L	18G * 7cm	18 mm	SA2019S	20G * 19cm	10 mm
SA1424L	14G * 24cm	18 mm	SA1813S	18G * 13cm	10 mm	SA2019L	20G * 19cm	18 mm
SA1607S	16G * 7cm	10 mm	SA1813L	18G * 13cm	18 mm	SA2024S	20G * 24cm	10 mm
SA1607L	16G * 7cm	18 mm	SA1819S	18G * 19cm	10 mm	SA2024L	20G * 24cm	18 mm
SA1613S	16G * 13cm	10 mm	SA1819L	18G * 19cm	18 mm			



# Biopsy Introducer



Patented introducer that allows for an airless condition around lesion during a procedure.



## Features

- ⊞ Trocar typed stylet
- ⊞ Patented airless introducer prevents air inflow at lung biopsy
- ⊞ Various models fitted to 14-20 gauge biopsy needles are available.

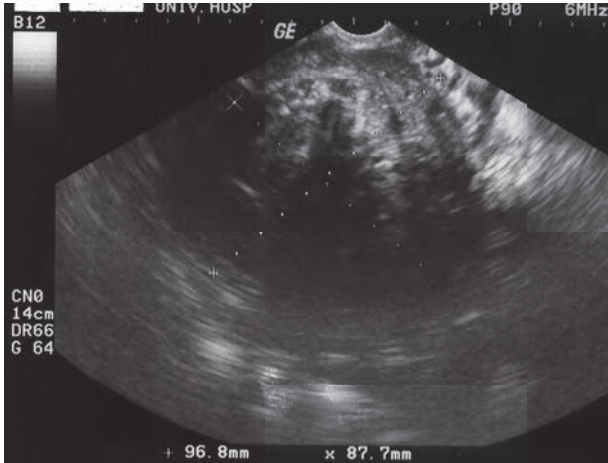
## Specifications

Product Code			Product Code			Product Code		
I-Model	Specification	Cap-Color	I-Model	Specification	Cap-Color	A-Model	Specification	Cap-Color
INT1304	13G * 4cm	Green	INT1704	17G * 4cm	Pink	INT1716A	17G * 16cm	White
INT1310	13G * 10cm	Green	INT1710	17G * 10cm	Pink	INT1721A	17G * 21cm	White
INT1316	13G * 16cm	Green	INT1716	17G * 16cm	Pink	INT1916A	19G * 16cm	White
INT1321	13G * 21cm	Green	INT1721	17G * 21cm	Pink	INT1921A	19G * 21cm	White
INT1504	15G * 4cm	White	INT1904	19G * 4cm	Yellow			
INT1510	15G * 10cm	White	INT1910	19G * 10cm	Yellow			
INT1516	15G * 16cm	White	INT1916	19G * 16cm	Yellow			
INT1521	15G * 21cm	White	INT1921	19G * 21cm	Yellow			

\* If you want to use it with an RF Medical biopsy needle, you can match with 1 gauge larger diameter than needle.



# Big-Tip for Myoma



## Features

- Internal cooling system prevents contiguous tissue from charring and thus makes bigger and rounder ablation zone.
- The edge between the exposure tip and the insulated part of the electrode is evenly smoothed out for easier insertion and repositioning of the electrode.
- Larger shaft diameter (Φ1.65mm) and long enough electrode length for use in percutaneous, Intraoperative and laparoscopic approaches.

## Specifications

Product Code	Diameter	Length	Exposure	Product Code	Diameter	Length	Exposure	Type	Application
BTM 2005Q(B)	Φ1.65mm	20cm	0.5cm	BTM 3005Q(B)	Φ1.65mm	30cm	0.5cm	Cooled Tip	For Uterine Fibroids & Adenomyosis
BTM 2010Q(B)	Φ1.65mm	20cm	1.0cm	BTM 3010Q(B)	Φ1.65mm	30cm	1.0cm		
BTM 2015Q(B)	Φ1.65mm	20cm	1.5cm	BTM 3015Q(B)	Φ1.65mm	30cm	1.5cm		
BTM 2020Q(B)	Φ1.65mm	20cm	2.0cm	BTM 3020Q(B)	Φ1.65mm	30cm	2.0cm		
BTM 2025Q(B)	Φ1.65mm	20cm	2.5cm	BTM 3025Q(B)	Φ1.65mm	30cm	2.5cm		
BTM 2030Q(B)	Φ1.65mm	20cm	3.0cm	BTM 3030Q(B)	Φ1.65mm	30cm	3.0cm		
BTM 2035Q(B)	Φ1.65mm	20cm	3.5cm	BTM 3035Q(B)	Φ1.65mm	30cm	3.5cm		
BTM 2040Q(B)	Φ1.65mm	20cm	4.0cm	BTM 3040Q(B)	Φ1.65mm	30cm	4.0cm		
BTM 2505Q(B)	Φ1.65mm	25cm	0.5cm	BTM 3505Q(B)	Φ1.65mm	35cm	0.5cm		
BTM 2510Q(B)	Φ1.65mm	25cm	1.0cm	BTM 3510Q(B)	Φ1.65mm	35cm	1.0cm		
BTM 2515Q(B)	Φ1.65mm	25cm	1.5cm	BTM 3515Q(B)	Φ1.65mm	35cm	1.5cm		
BTM 2520Q(B)	Φ1.65mm	25cm	2.0cm	BTM 3520Q(B)	Φ1.65mm	35cm	2.0cm		
BTM 2525Q(B)	Φ1.65mm	25cm	2.5cm	BTM 3525Q(B)	Φ1.65mm	35cm	2.5cm		
BTM 2530Q(B)	Φ1.65mm	25cm	3.0cm	BTM 3530Q(B)	Φ1.65mm	35cm	3.0cm		
BTM 2535Q(B)	Φ1.65mm	25cm	3.5cm	BTM 3535Q(B)	Φ1.65mm	35cm	3.5cm		
BTM 2540Q(B)	Φ1.65mm	25cm	4.0cm	BTM 3540Q(B)	Φ1.65mm	35cm	4.0cm		
VCTM 10XXB	Φ1.65mm	10cm	0.5cm ~ 4cm	VCTM 10XXBNI	Φ1.65mm	10cm	0.5cm ~ 4cm	Variable Exposure Cooled Tip Ni: Nitinol	
VCTM 15XXB	Φ1.65mm	15cm	0.5cm ~ 4cm	VCTM 15XXBNI	Φ1.65mm	15cm	0.5cm ~ 4cm		
VCTM 20XXB	Φ1.65mm	20cm	0.5cm ~ 4cm	VCTM 20XXBNI	Φ1.65mm	20cm	0.5cm ~ 4cm		
VCTM 25XXB	Φ1.65mm	25cm	0.5cm ~ 4cm	VCTM 25XXBNI	Φ1.65mm	25cm	0.5cm ~ 4cm		
VCTM 30XXB	Φ1.65mm	30cm	0.5cm ~ 4cm	VCTM 30XXBNI	Φ1.65mm	30cm	0.5cm ~ 4cm		
VCTM 35XXB	Φ1.65mm	35cm	0.5cm ~ 4cm	VCTM 35XXBNI	Φ1.65mm	35cm	0.5cm ~ 4cm		

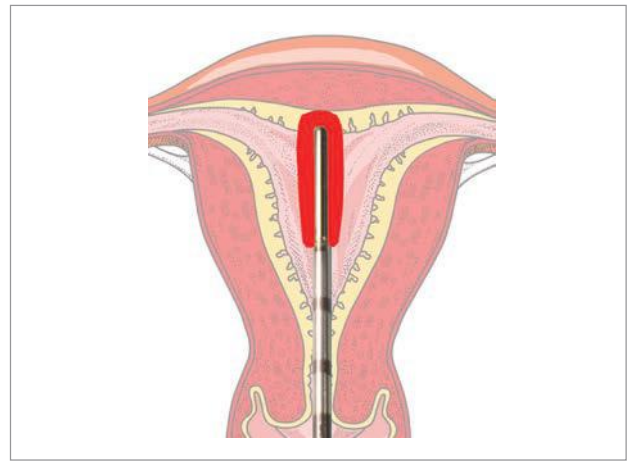
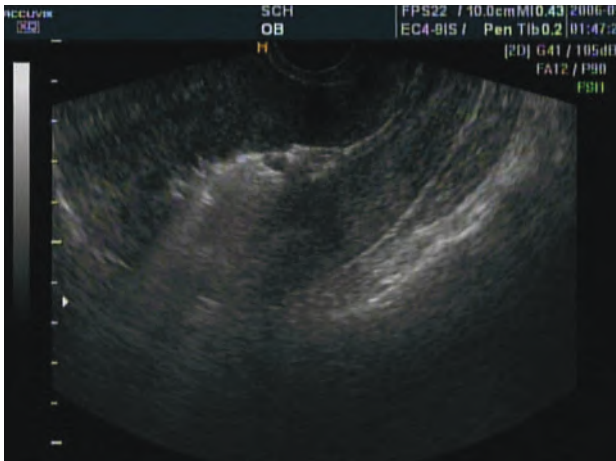
\*Big-Tip for Myoma has two types of handle. Standard type (BTM 2030Q, BTM 2510Q, ...) and Bendable type (BTM 2030QB, BTM 2510QB, ...)



# EMT for Endometrial Ablation



*Quick and the most simple method but very effective!*



## Features

- ⊞ Unique temperature control program.
- ⊞ Can control menstruation volume by controlling ablation area.
- ⊞ The procedure time is short within minutes.
- ⊞ No incisions are required, leaving your uterus intact.

## Specifications

Product Code	Diameter	Length	Exposure	Type	Application
EMT 2305Q	Ø5.0 mm	23 cm	0.5 cm	Temperature Control type	For Endometrial Ablation
EMT 2310Q	Ø5.0 mm	23 cm	1.0 cm		
EMT 2315Q	Ø5.0 mm	23 cm	1.5 cm		
EMT 2320Q	Ø5.0 mm	23 cm	2.0 cm		
EMT 2325Q	Ø5.0 mm	23 cm	2.5 cm		
EMT 2330Q	Ø5.0 mm	23 cm	3.0 cm		
EMT 2335Q	Ø5.0 mm	23 cm	3.5 cm		
EMT 2340Q	Ø5.0 mm	23 cm	4.0 cm		



Dedicated for endovenous thermal ablation

## VeinCLEAR™ System Generator V-200



### Features

- Easy operation
- Universal Voltage
- Automatic identification of the catheter
- Automatic function test of the catheter
- Convenient foot switch

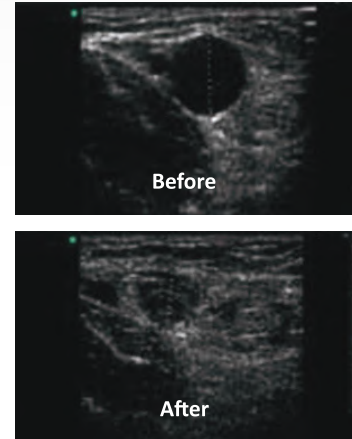
### Specifications

Protection Class	I
Protection Type	BF
Input Power Voltage	AC100V ~ 240V
Input Power Frequency	50/60Hz
Maximum Input Power	100VA
Output Power	40W
Measuring Temperature	0°C~200°C
Alarm Sound	65dB

\*Specifications are subject to change without notice.



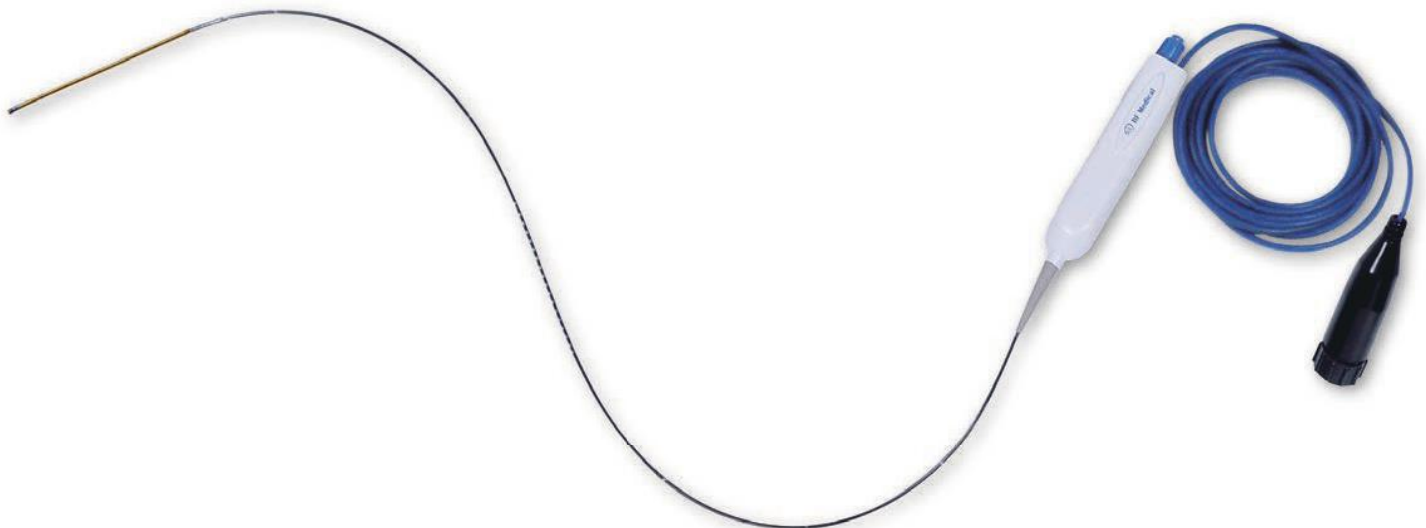
## RF Varicose Vein Treatment



Courtesy of Dr. Akhlaghpour

### Advantages of RF Varicose Vein Treatment

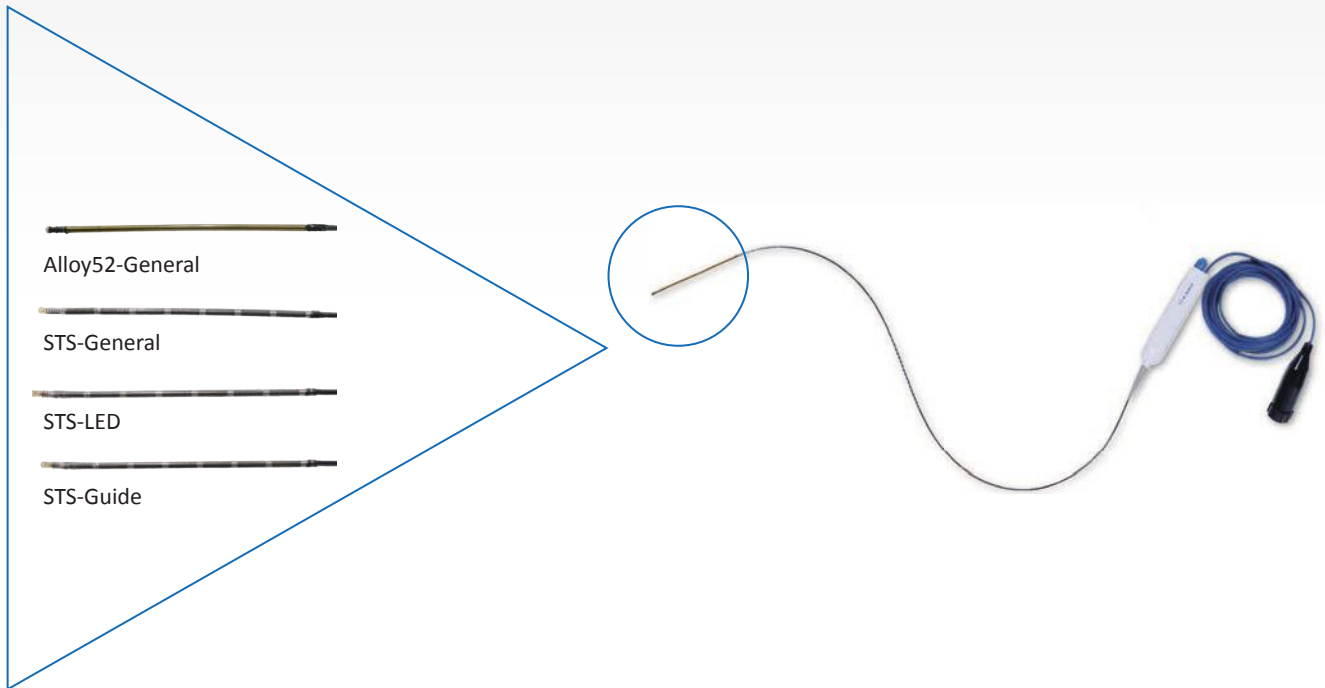
- Proven Minimally Invasive Technology
  - Within 3 minutes procedure
  - Out-patient basis
  - Lower pain
- High occlusion rate with low complication rate







# VeinCLEAR™ System Catheter



## Features

- ⊞ Variable segmental ablation zone (1~7cm heating coil range)
- ⊞ Fast but effective (20 seconds for each segment)
- ⊞ Wide selection (Alloy to STS with or without LED)

## Specifications

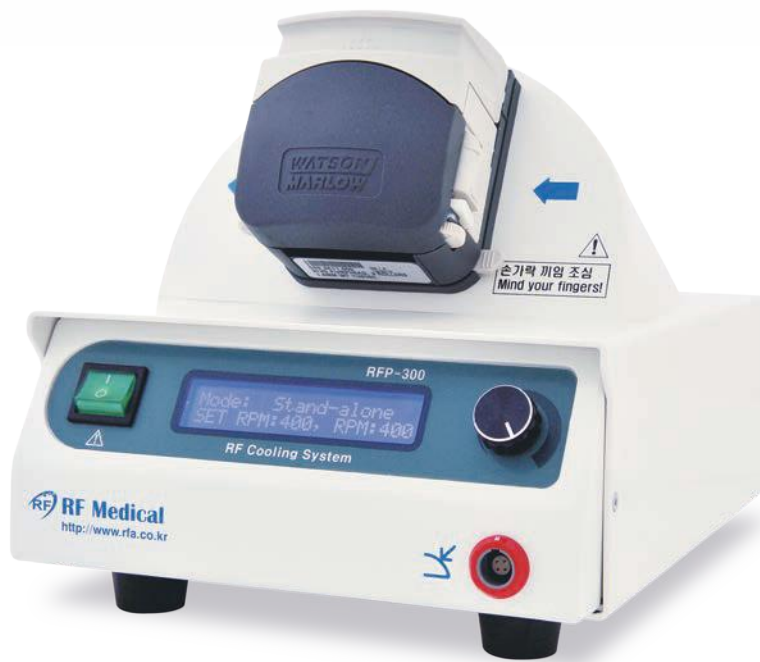
Product Code	Type	Diameter	Length	Heater Length	Guidewire	Guidewire	Compatible Introducer		
VVT 4510	Alloy52 - General	ø2.2 mm	45 cm	1 cm	Varicose Veins (Short Segments)	0.25"	7F		
VVT 4515				1.5 cm					
VVT 4520				2 cm					
VVT 4530				3 cm					
VVT 60			60 cm	7 cm	Varicose Veins (Long Segments)				
VVT 70			70 cm	7 cm					
VVT 90			90 cm	7 cm					
VVT 100			100 cm	7 cm					
VVT 7020 <sup>Ⓢ</sup>					70 cm			2 cm	Varicose Veins (Short Segments)
VVT 7030 <sup>Ⓢ</sup>					70 cm			3 cm	
VVT 70FG	STS - General	ø2.0 mm	70 cm	7 cm	Large Veins	N/A	6F		
VVT 100FG			100 cm		Small Veins				
VVT 70FS		ø1.65 mm	70 cm						
VVT 100FS	100 cm								
VVT 70FGL	STS - LED	ø2.0 mm	70 cm		Varicose Veins			7F	
VVT 100FGL			100 cm						
VVT 70FGW	STS - Guide		70 cm						
VVT 100FGW			100 cm						



# Tumescent Infiltration Pump RFP-300

## Features

- ⊞ Operation status display
- ⊞ Injection speed control
- ⊞ Dedicated IV Pole included



## Specifications

Protection Class	I
Protection Type	BF
Input Power Voltage	AC100V ~ 240V
Input Power Frequency	50/60Hz
Maximum Input Power	60VA
Display	20*2 Character LCD
RPM	30 ~ 400RPM
Injection Control	By Foot Switch

\*Specifications are subject to change without notice.



# Tumescent Infiltration Hand-Pieces



<Tumescent Infiltration Hand-Piece>

## Features

- ⊖ Time saving
- ⊖ Ergonomic designs
- ⊖ Wider selection

## Specifications

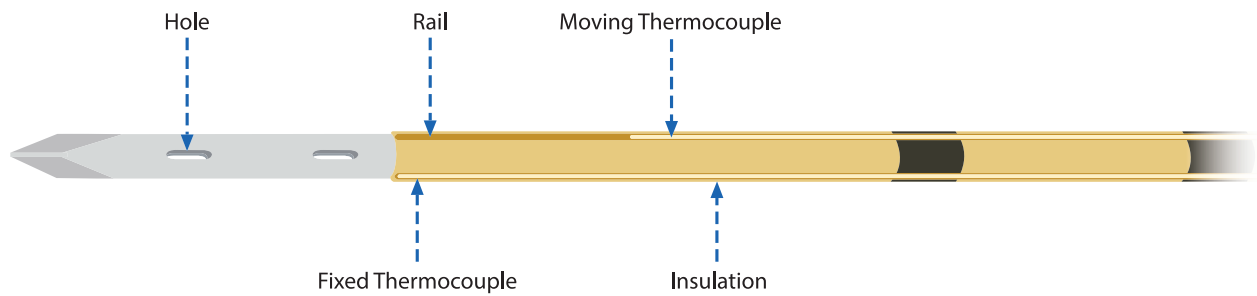
Type	Product Code	Code Reading	Remark
TI-2B	"TI-◆◆○●-□□△△ [TI-2B○●-□□△△] * Needle Gauge (17~ 30G) * Needle Length (13~190mm)"	◆◆ : Number of Bags (2B: 2Bag) ○ : Pump tube OD size (4 : Φ4.0mm~ Φ4.9mm) (5 : Φ5.0mm~ Φ5.9mm) (6 : Φ6.0mm~ Φ6.9mm) ● : Spike connection type (P : Removable pump tube and spike) (S : Straight connection type) (A : All connection type) □□ : Needle Gauge (17~ 30G) △△ : Needle Length (13~140mm)	
TI-1B4S	"TI-◆◆○●-□□△△ [TI-1B4S-□□△△]"		
TI-1B4P	"TI-◆◆○●-□□△△ [TI-1B4P-□□△△]"		
TI-1B4A	"TI-◆◆○●-□□△△ [TI-1B4A-□□△△]"		
TI-1B4PP-XX	"TI-◆◆○●-XX [TI-1B4PP-XX]"	◆◆ : Number of Bags (1B : 1Bag) ○ : Pump tube OD size (4 : Φ4.0mm~ Φ4.9mm) ● : Spike connection type (PP : Removable pump tube and spike AND Injection Tube ID is Φ1.2mm) XX : Non Injection Needle type □□ : Needle Gauge (21~24G) △△ : Needle Length (60~80mm)	
TI-1B4PP	"TI-◆◆○●-□□△△ [TI-1B4PP-□□△△]"		
TI-1B4NV	"TI-◆◆○○●- [TI-1B4NV-□□△△]"	◆◆ : Number of Bags (1B : 1Bag; 2Bag) ○ : Pump tube OD size (4 : Φ4.0~4.9) ●● : Needle connection type (NV : Compatible type with other company's product) □□ : Injection tube length (3M : 3m, 4M : 4m) △ : have the handle or non-handle (H : have the handle)	1. Non-handle Type 2. Handle Type



# Bone Metastasis Tip



<BMDT 1715B>



## Features

- Saline perfusion type electrode with **two thermocouples, one is fixed for lesion temperature control and the other one is movable for real time tissue temperature monitoring.**
- Quite useful and helpful for safe treatment in critical lesion like spinal body.
- Effective for palliation of terrible pain.
- Stable and precise Temperature control.
- Under C.T guidance or C-Arm guidance.

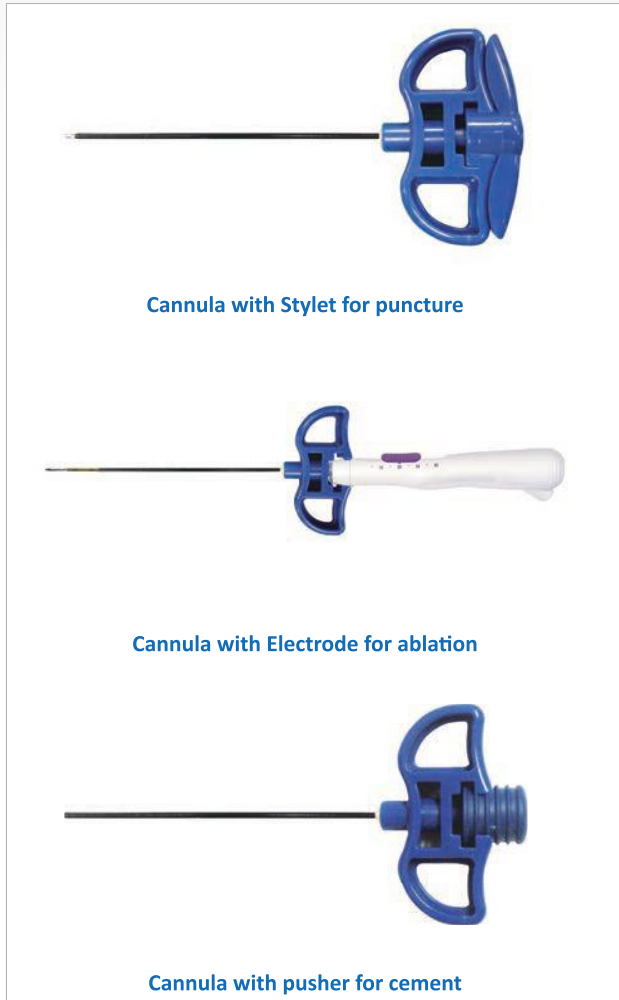
## Specifications

Product Code	Diameter	Length	Exposure	Remark	Application
BMDT 1310B	Ø1.5 mm	13 cm	1.0 cm	Saline Perfusion Tip	For Bone Metastasis
BMDT 1315B	Ø1.5 mm	13.5 cm	1.5 cm		
BMDT 1420B	Ø1.5 mm	14 cm	2.0 cm		
BMDT 1425B	Ø1.5 mm	14.5 cm	2.5 cm		
BMDT 1530B	Ø1.5 mm	15 cm	3.0 cm		
BMDT 1610B	Ø1.5 mm	16.5 cm	1.0 cm		
BMDT 1715B	Ø1.5 mm	17 cm	1.5 cm		
BMDT 1720B	Ø1.5 mm	17.5 cm	2.0 cm		
BMDT 1825B	Ø1.5 mm	18 cm	2.5 cm		
BMDT 1830B	Ø1.5 mm	18.5 cm	3.0 cm		

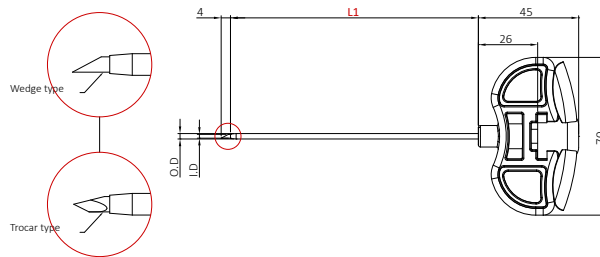
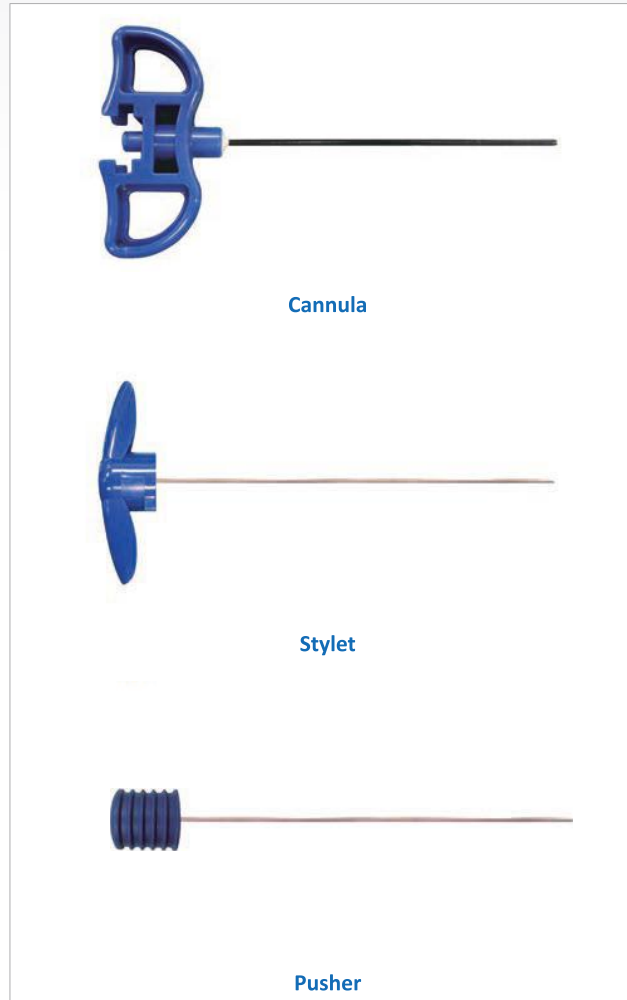


# Puncture Needle

## Usage



## Components



## Specifications

Product Code	OD	ID	** = (L1)	Type	Stylet Type
VP**(T)	Ø2.4 mm	Ø1.7 mm	36 ~101 (5mm Interval)	Non Insulated	Trocar Type = T Wedge type = Non indication
VP**Q(T)	Ø2.6 mm	Ø1.9 mm	105 ~180 (5mm Interval)		
VP**W(T)	Ø2.7 mm	Ø2.0 mm	36 ~101 (5mm Interval)		
VPT**(T)	Ø2.4 mm	Ø1.7 mm	105 ~180 (5mm Interval)	Teflon Insulated	
VPT**Q(T)	Ø2.6 mm	Ø1.9 mm	36 ~101 (5mm Interval)		
VPT**W(T)	Ø2.7 mm	Ø2.0 mm	105 ~180 (5mm Interval)		
			36 ~101 (5mm Interval)		



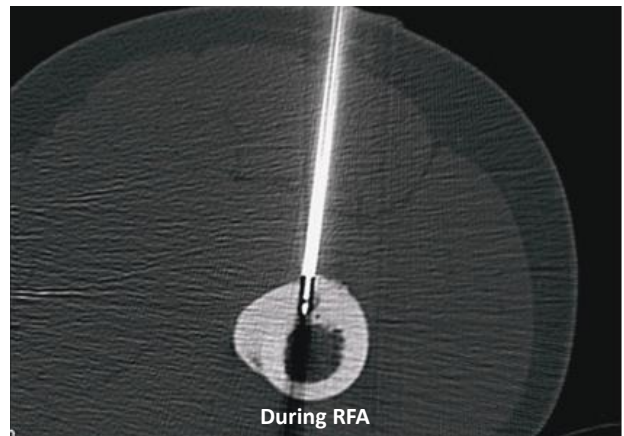
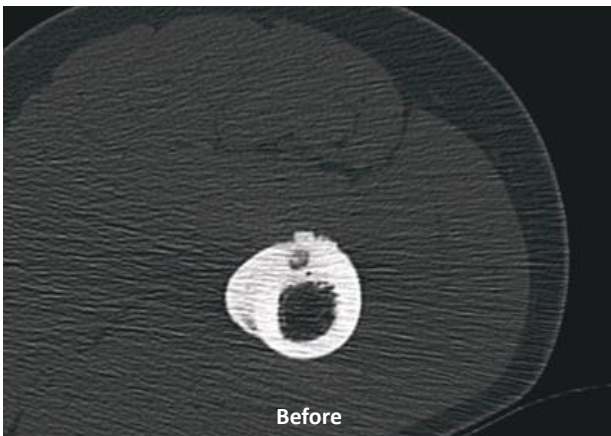
# Osteoid Osteoma



*RF Ablation for Osteoid Osteoma - Minimal Invasive, Safe, Simple, Proven Therapy*



<VCT 15XXB>



Courtesy of Dr. Akhlaghpoor

## Features

- ⊞ Applicable for different sizes of nidus from 5mm to 20mm with one needle.
- ⊞ Bendable handle requires minimum space under C.T guidance.
- ⊞ Exact real-time temperature monitoring.
- ⊞ Precise temperature control algorithm from the RF generator.

## Specifications

Product Code	Diameter	Length	Exposure	Remark	Application
BT 1005(B)	Ø1.5 mm	10 cm	0.5 cm	Cooled Tip	For Osteoid Osteoma
BT 1010(B)	Ø1.5 mm	10 cm	1.0 cm		
BT 1510(B)	Ø1.5 mm	15 cm	1.0 cm		
VCT 10XXB	Ø1.5 mm	10 cm	0.5 cm ~ 4.0 cm	Variable Exposure, Cooled Tip	
VCT 15XXB	Ø1.5 mm	15 cm	0.5 cm ~ 4.0 cm		

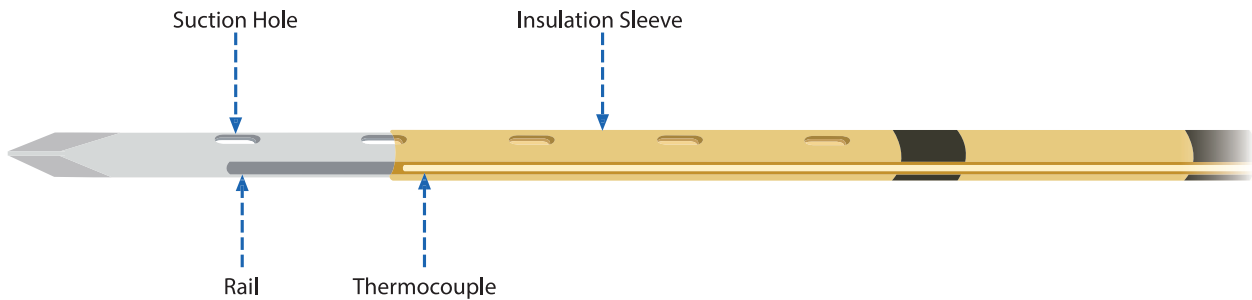
\*Electrode for the Osteoid Osteoma has two types of handle. Standard type(BT 1005, BT 1010, ...) and Bendable type(BT 1005B, VCT 10XXB, ...)



# CysTip™ for Various Kinds of Cysts



<CST 15XXB>



※ Insulation sleeve moves along with Thermocouple

## Features

- Safe & Effective procedure.
- Can measure internal temperature and cyst wall temperature in real time by moving temperature sensor.
- No need for separate aspiration needle.
- Applicable for various sizes of Cysts by adjustable exposure tip length.
- Ideal for Liver Cysts and Renal Cysts.

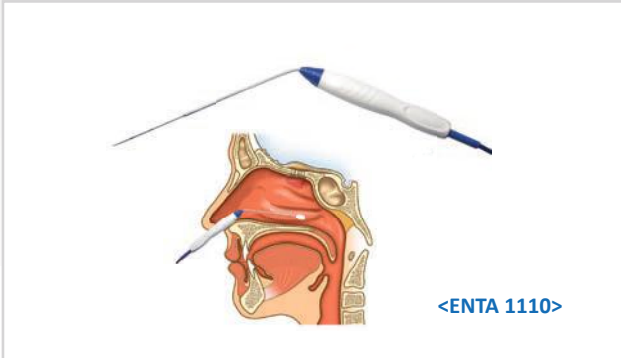
## Specifications

Product Code	Diameter	Length	Exposure	Remark	Application
CST 10XXB	Ø1.5 mm	10cm	0.5 cm ~ 4.0 cm	Variable Exposure along with moving thermocouple	For various kinds of Cysts
CST 15XXB	Ø1.5 mm	15cm	0.5 cm ~ 4.0 cm		
CST 20XXB	Ø1.5 mm	20cm	0.5 cm ~ 4.0 cm		
CST 25XXB	Ø1.5 mm	25cm	0.5 cm ~ 4.0 cm		
CST 30XXB	Ø1.5 mm	30cm	0.5 cm ~ 4.0 cm		
CST 35XXB	Ø1.5 mm	35cm	0.5 cm ~ 4.0 cm		



# ENT & Neurofibroma Electrode

## Electrode for Nasal, Palate, Tongue procedures



## Electrode for Neurofibroma



<ENTS 0510>



## Specifications

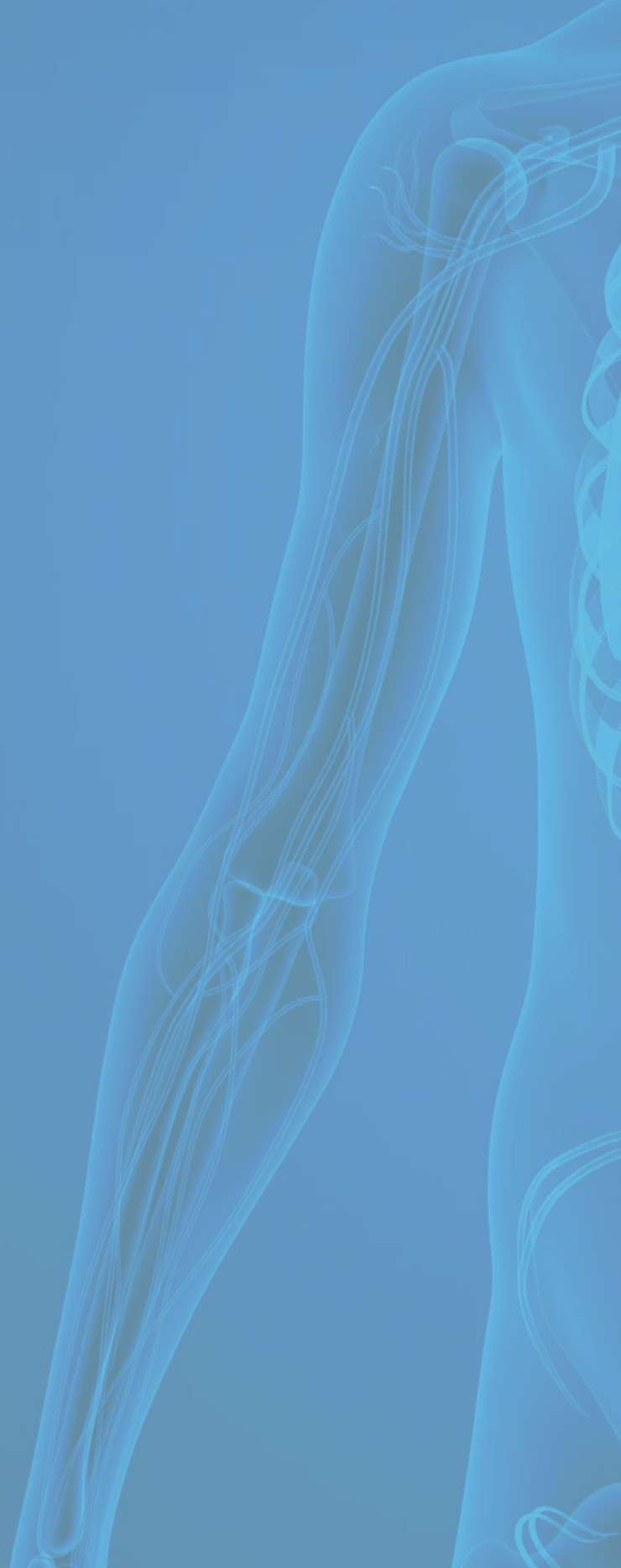
Product Code	Diameter	Length	Expanded width	Application
ENTS 0503	Ø0.71 mm	5 cm	0.3 cm	For Neurofibroma
ENTS 0505	Ø0.71 mm	5 cm	0.5 cm	
ENTS 0507	Ø0.71 mm	5 cm	0.7 cm	
ENTS 0510	Ø0.71 mm	5 cm	1.0 cm	
ENTA 1103	Ø1.06 mm	11 cm	0.3 cm	For Snoring, Sleep Apneas
ENTA 1105	Ø1.06 mm	11 cm	0.5 cm	
ENTA 1107	Ø1.06 mm	11 cm	0.7 cm	
ENTA 1110	Ø1.06 mm	11 cm	1.0 cm	
ENTD 1203	Ø1.26 mm	12 cm	0.3 cm	
ENTD 1205	Ø1.26 mm	12 cm	0.5 cm	
ENTD 1207	Ø1.26 mm	12 cm	0.7 cm	
ENTD 1210	Ø1.26 mm	12 cm	1.0 cm	





## History

- 2018** ○ MAR. Filed 510K for FDA approval
- 2017** ○ AUG. Acquired the certificate of ANVISA from Brazil
- 2016** ○ NOV. Established an European branch in the Netherlands  
○ OCT. Acquired CE for Tumescentor TM
- 2015** ○ MAY. Registered electrode patent in USA  
○ JAN. Registration of patent about electrode - JE1489197HO
- 2014** ○ OCT. Registration of patent about electrode - JE1449965HO  
○ JUN. Appointed as a participant of Active Catheter System development project by The ministry of Health & Welfare [Main organizer : Asan Medical Center]
- 2013** ○ JAN. Registration of patent about RF electrode – JE1227073HO
- 2012** ○ OCT. Awarded as an Korean World-class Product manufacturer from The Ministry of Knowledge Economy  
○ JUN. Appointed as a participant of Interventional surgical robot development project by The ministry of Trade, Industry & Energy [Main organizer : Asan Medical Center]  
○ JAN. Registration of patent about RF electrode – JE1108569HO
- 2011** ○ AUG. Acquired the certificate of SFDA from China  
○ JUN. Registered electrode patent in China
- 2010** ○ MAR. Acquired the certificate of TFDA in Taiwan
- 2009** ○ NOV. Acquired the certificate of GOST in Russia  
○ MAY. Registered electrode patent in Japan
- 2008** ○ APR. Registration of patent about RF electrode – JE0825872HO
- 2007** ○ OCT. Registration of patent about RF electrode – JE0773587HO  
○ APR. Certified RF Myolysis as New Medical Technology by Ministry of Health & Welfare
- 2006** ○ DEC. Registration of patent about RF electrode - JE640283HO  
○ JUL. Appointed Venture Business by Small & Medium Business Administration  
○ JUN. Established Research Institute certified by Korea Industrial Technology Accusation  
○ FEB. Acquired certificate of KGMP from KFDA
- 2005** ○ NOV. Converted into a corporation, RF Medical Co., Ltd.  
○ SEP. Acquired the certificates of CE 0120, ISO 9001 and ISO 13485 from SGS United Kingdom Ltd.  
○ JAN. Registration of patent about RF electrode - JE466866HO
- 2004** ○ AUG. Registration of the factory  
○ JUL. Acquired certificate of Manufacturing and license of items from KFDA
- 2003** ○ DEC. Established a private firm, RF Medical systems







**RF Medical Co., Ltd.**

#502, 503, 505, 506, 507, 511, 254 Beotkkot-ro,  
Geumcheon-gu, Seoul, Korea 08511

**TEL** 82-2-2108-4200 **FAX** 82-2-2113-7999

**E-mail** [overseas@rfa.co.kr](mailto:overseas@rfa.co.kr) **Homepage** [www.rfa.co.kr](http://www.rfa.co.kr)

※ All product specifications are subject to change without notice.

RFCT-001(E) Rev. 10 (2018.11.20)