



High-Definition Wireless Ultrasound for **Cardiology**

Image You Can Trust

The Clarius PA HD3 wireless scanner delivers superior echocardiography, with color and pulsed wave Doppler. Add rapid lung imaging for a comprehensive cardiovascular assessment.



Image Clarity You Can Trust for a Confident Diagnosis

Pocket-sized with up to 8 times faster frame rates, the Clarius PA HD3 high-resolution wireless scanner is the best choice for hospital-grade cardiac imaging to quickly triage and monitor patients. Use the comprehensive cardiovascular measurements package and pulsed wave Doppler for rapid diagnosis of cardiac conditions at the bedside.

- Promptly assess LVEF and regional wall motion abnormalities
- Identify cardiac tamponade or RV strain
- Evaluate valvular pathology with pulse wave Doppler
- Identify decompensated heart failure with pulmonary edema
- Evaluate signs of heart failure with preserved ejection fraction
- Assess changes in cardiac function over time with follow-up exams



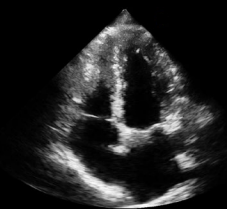
**Clarius PA HD3
Phased Array Scanner**

**Frequency: 1-5 MHz
Max Depth: 40 cm**



**Clarius C3 HD3
Curvilinear Scanner**

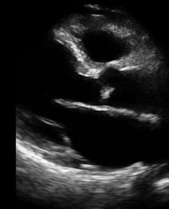
**Frequency: 2-6 MHz
Max Depth: 40 cm**



Apical (PA)



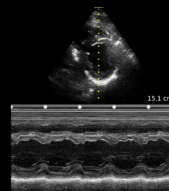
Subcostal (C3)



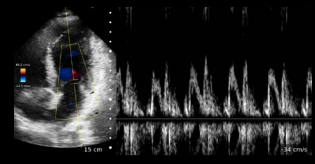
CHF (PA)



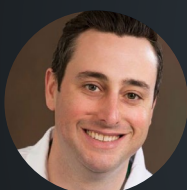
PLAX Heart (PA)



LV (PA)



MV Inflow (PA)



I have been exceedingly impressed with the Clarius Phased Array Scanner and had the opportunity to trial the most recent software update. The image quality has always been truly outstanding, and now the platform is more intuitive and responsive."

Dr. Zachary Laksman, MD, MSc - Cardiologist

High-Definition Ultrasound in a Portable Wireless Scanner



High-Definition

Octal Beamforming technology and 192 piezoelectric elements deliver high performance and resolution.



Wireless

Steadfast connection. Total freedom. Without cords, cleaning and disinfection are simple and fast.



Easy To Use

Friendly AI-powered app for your Apple or Android automatically delivers the best imaging.



Specialized

AI-powered with specialized presets and automated workflows.



Ultra-Portable

Ideal for small spaces, Clarius fits in your pocket. Take it anywhere!



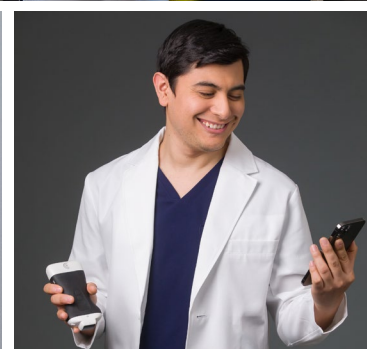
Cloud and DICOM

Save images to DICOM or manage your exams anywhere, anytime with unlimited Clarius Cloud storage.



Since Clarius is so portable, I'm using ultrasound way more than I used to. It's like my stethoscope. The image quality is very good. With handheld ultrasound, we're now able to complete many ultrasound exams, including cardiac ultrasound, lung ultrasound, and abdominal ultrasound."

Dr. Virginia Robinson, MD



Advanced Software Package

The Advanced Primary/Critical Care Package offers more flexibility with additional automated tools and workflow solutions for generalized scanning and whole body imaging, including eFAST.



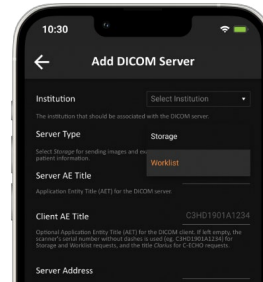
Auto Heart Rate

AI automatically calculates the heart rate, without manually making measurements with spectral modes.



Pulsed Wave Doppler

Measure and visualize key flow information through a simple and intuitive interface.



DICOM

Seamlessly transfer saved images and videos to PACS servers through the current DICOM web standard.

Additional Features

- Act One™
- Auto Preset AI
- Procedure Recording Mode
- Split Screen Mode

Clarius Membership

The Advanced Primary/Critical Care Package is included with your Membership.

Membership Bundle

With your membership plan, you'll receive a discount on a scanner and the following:

- ✓ Support
- ✓ 60 Minutes of 1:1 Training
- ✓ Unlimited Clarius Cloud Storage
- ✓ Clarius Live
- ✓ Clarius Education
- ✓ Advanced Primary/Critical Care Package

One-Time Purchase

You may also purchase your scanner outright with the Advanced Primary/Critical Care Package à la carte:

- ✓ Support
- ✓ 60 Minutes of 1:1 Training
- ✓ Advanced Primary/Critical Care Package

[REQUEST A QUOTE](#)

Clarius is on a mission to make accurate, easy-to-use, affordable ultrasound available to all medical professionals in every specialty. Our ultra-portable wireless scanners deliver best-in-class imaging with an easy-to-use app for iOS and Android that is powered by artificial intelligence and connected to the cloud. More than two million high-definition scans have been performed using Clarius wireless scanners, now available in over 90 countries worldwide.

Clarius Mobile Health

2985 Virtual Way #130,
Vancouver, BC, V5M 4X7
Canada
hello@clarius.com
Phone 1-778-800-9975